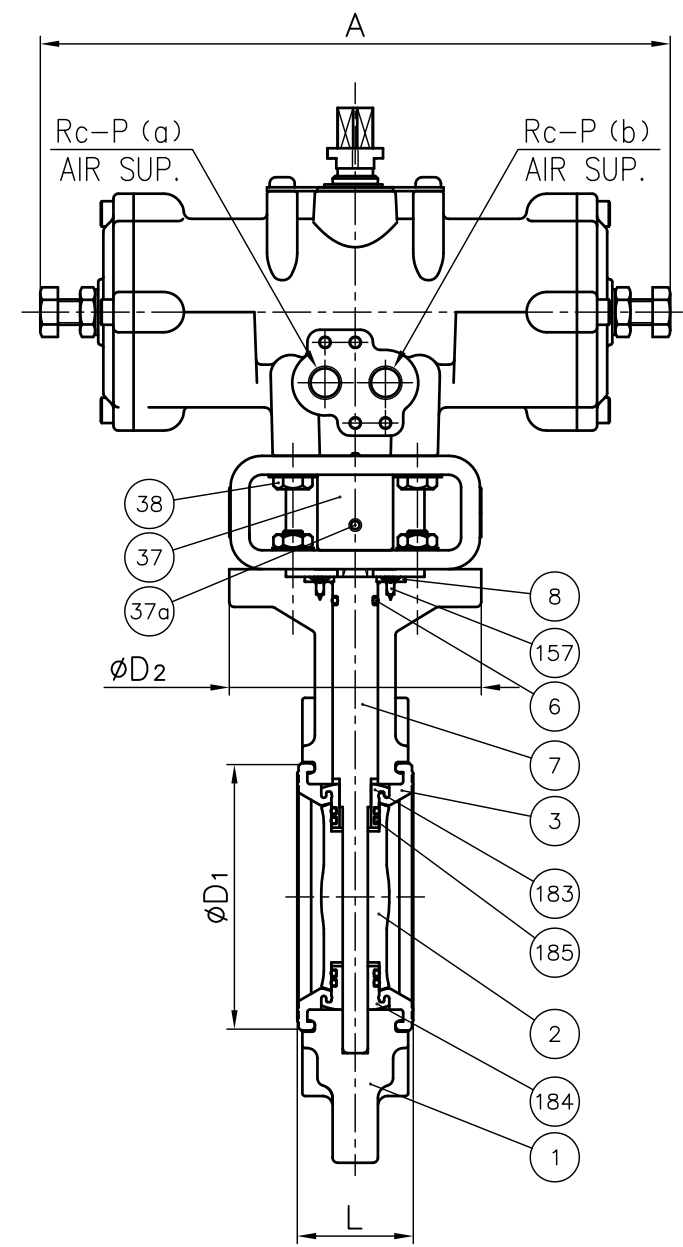
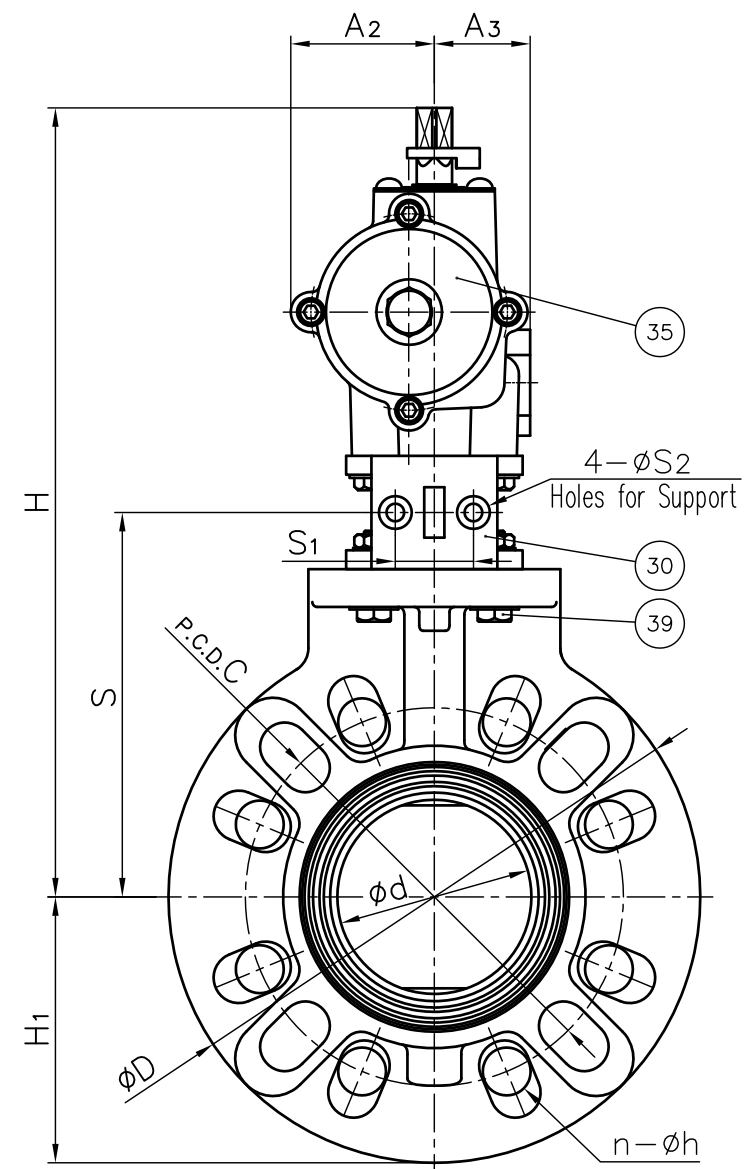
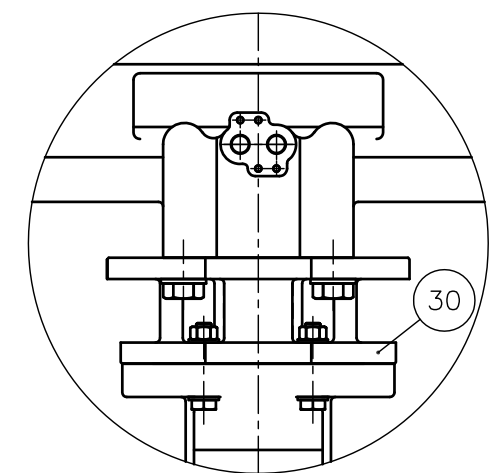


40mm (1½") – 150mm (6")



The Shape of Stand

200mm (8") – 350mm (14")



NOTE.

- Operating pressure : 0.4–0.7MPa G  
Valve open ; Port (a) Exhaust Port (b) Supply  
Valve close ; Port (a) Supply Port (b) Exhaust
- The shape and appearance of assembly differ a little with nominal size compared to this drawing.

157	SCREW (F)	4	STAINLESS STEEL (SUS304)	
39	BOLT·NUT (A)	4Sets	STAINLESS STEEL (SUS304)	
38	BOLT (E)	4	STAINLESS STEEL (SUS304)	
37a	SCREW (C)	1	STAINLESS STEEL (SUS304)	
37	JOINT (A)	1	COPPER ALLOY (C3604)	
35	ACTUATOR	1	ALUMINIUM ALLOYS DIE CASTINGS (ADC12) etc. CAST IRON (FC200) etc.	Used for Size 40–300mm Meramin Baking Coat. Used for Size 350mm Acryl Coat.
30	STAND	1	PPG CAST ALUMINIUM ALLOY (AC4C)	Used for Size 40–150mm Used for Size 200–350mm Epoxy Coat.
8	STEM HOLDER (A)	1	PP	
7	STEM	1	□ STAINLESS STEEL (SUS403) □ STAINLESS STEEL (SUS316)	
185	O-RING (I)	4	□ EPDM	
6	O-RING (C)	1	□ FKM □ Others	
3	SEAT	1	( )	
184	SEAT BUSH (B)	1	BODY / DISC SEAT BUSH	
183	SEAT BUSH (A)	1	□ PVC/PP □ PP/PP □ PVDF/PVDF	
2	DISC	1		
1	BODY	1		

DIMENSIONS TABLE

UNIT: mm

NOMINAL SIZE	d	DIN PN10				L	D	D <sub>1</sub>	D <sub>2</sub>	H	H <sub>1</sub>	A	A <sub>2</sub>	A <sub>3</sub>	S	S <sub>1</sub>	S <sub>2</sub>	P	Actuator Type
		C	n	h															
40mm 1½"	45	110	4	18	39	150	71	100	263	75	210	46	36	117.5	32	7	¼	TA2A-050D	
50 2	56	125	4	18	42	165	81	100	273	83	210	46	36	127.5	32	7	¼	TA2A-050D	
65 2½	69	145	4	18	46	185	95	100	298	93	250	57	38	137.5	32	7	¼	TA2A-063D	
80 3	77	160	8	18	46	211	105	100	313	106	250	57	38	152.5	32	7	¼	TA2A-063D	
100 4	102	180	8	18	56	238	134	100	361	119	292	71	45	167.5	32	7	¼	TA2A-080D	
125 5	129	210	8	18	66	255	169	140	413	128	362	85.5	57	185.5	42	9	¼	TA2A-100D	
150 6	150	240	8	22	71	285	190	140	428	143	362	85.5	57	200.5	42	9	¼	TA2A-100D	
200 8	195	295	8	22	87	350	242	140	493	175	440	90	60	—	—	—	¼	TA2A-125D	
250 10	250	350	12	22	112	421	302	180	584	211	532	113	68	—	—	—	¼	TA2A-160D	
300 12	303	400	12	22	129	488	360	235	641	244	532	113	68	—	—	—	¼	TA2A-160D	
350 14	351	460	16	22	129	539	393	235	732	270	664	139	85	—	—	—	¾	TA-200D	

No.	DESCRIPTION	QTY.	MATERIAL	REMARKS
ITEM	BUTTERFLY VALVE (TYPE 57) PNEUMATIC MODEL TA TYPE ASS'Y DOUBLE ACTING DIN PN10 40mm (1½") ~ 350mm (14")			
DRAWN	M.Oosako	DATE	SCALE	
CHECKED	H.Kawano	JUL.22.2011	DRAWING No.	
APPROVED	Y.Ozaki	57-AA001DE		△
SPECIAL ORDER No.	ASAHI YUKIZAI CORPORATION			