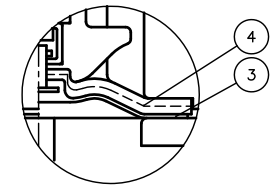
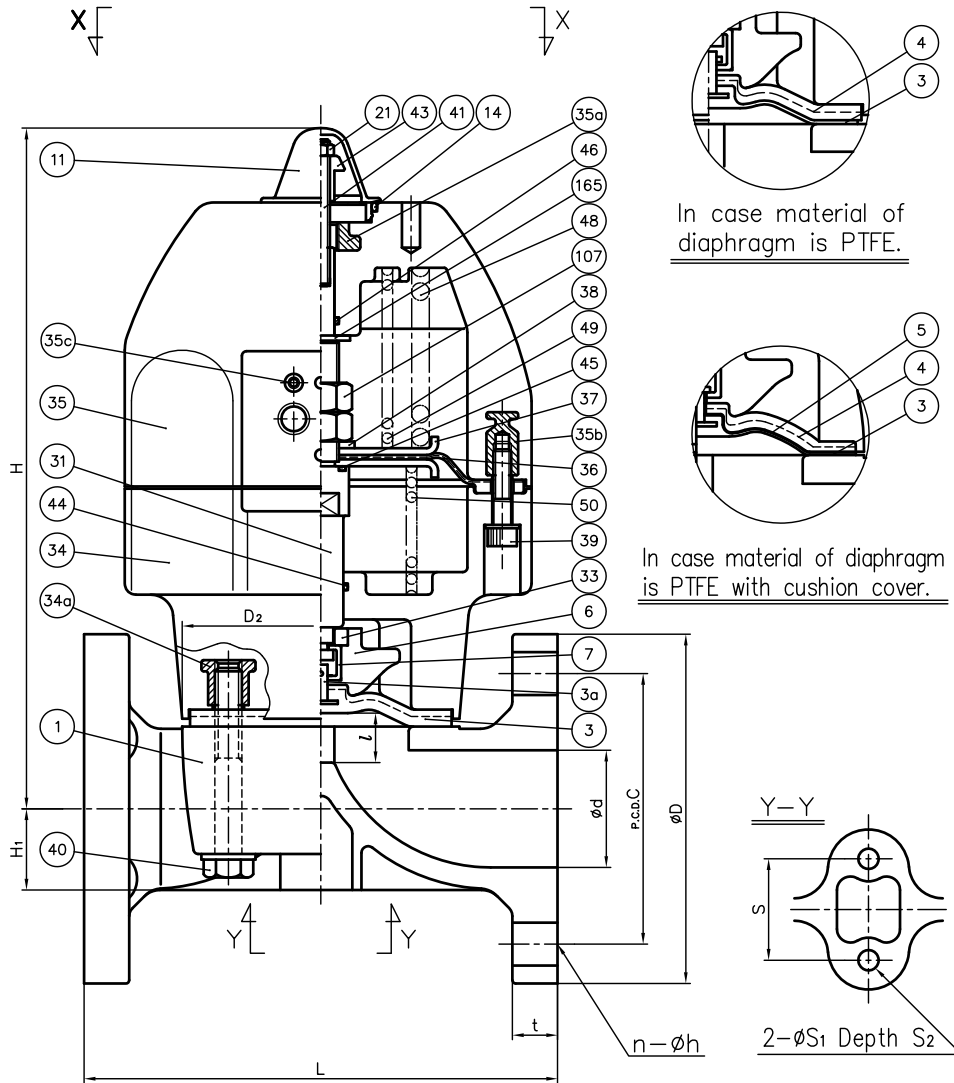


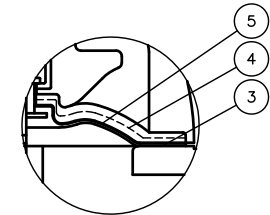
DIMENSIONS TABLE

UNIT: mm

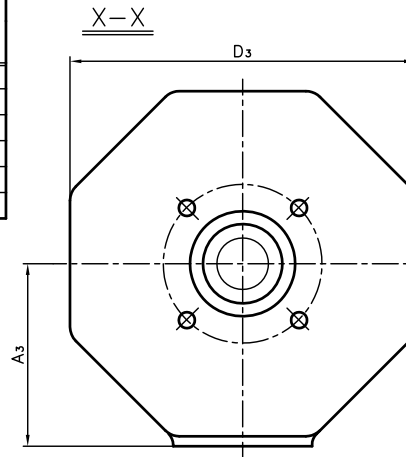
| NOMINAL SIZE | d  | JIS 10K |     |   |    | D <sub>2</sub> | D <sub>3</sub> | L   | t  | l (LIFT) | H   | H <sub>1</sub> | A <sub>3</sub> | S  | S <sub>1</sub> | S <sub>2</sub> | P   |
|--------------|----|---------|-----|---|----|----------------|----------------|-----|----|----------|-----|----------------|----------------|----|----------------|----------------|-----|
|              |    | D       | C   | n | h  |                |                |     |    |          |     |                |                |    |                |                |     |
| 15mm 1/2     | 16 | 95      | 70  | 4 | 15 | 54×66          | 130            | 110 | 12 | 10       | 186 | 19.5           | 68             | 25 | 7              | 13             | 1/4 |
| 20 3/4       | 20 | 100     | 75  | 4 | 15 | 54×66          | 130            | 120 | 13 | 10       | 188 | 17.5           | 68             | 25 | 7              | 13             | 1/4 |
| 25 1         | 25 | 125     | 90  | 4 | 19 | 67×80          | 130            | 130 | 13 | 12       | 193 | 18.5           | 68             | 25 | 7              | 13             | 1/4 |
| 32 1 1/4     | 32 | 135     | 100 | 4 | 19 | 67×80          | 130            | 142 | 16 | 12       | 197 | 22.5           | 68             | 25 | 7              | 13             | 1/4 |
| 40 1 1/2     | 40 | 140     | 105 | 4 | 19 | 108×108        | 174            | 180 | 16 | 21       | 293 | 27.5           | 92             | 45 | 9              | 15             | 1/4 |
| 50 2         | 52 | 155     | 120 | 4 | 19 | 123×123        | 174            | 210 | 20 | 25       | 302 | 36             | 92             | 45 | 9              | 15             | 1/4 |



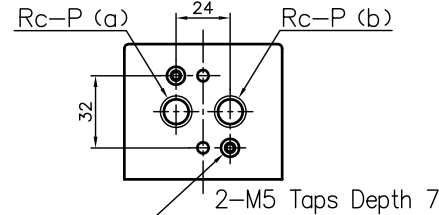
In case material of diaphragm is PTFE.



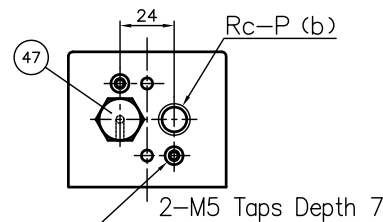
In case material of diaphragm is PTFE with cushion cover.



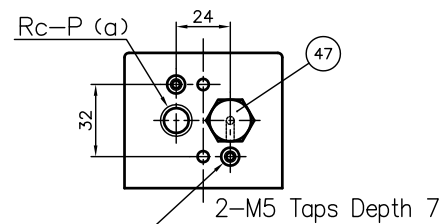
Face of Air Supply (Double Acting)



Face of Air Supply (Air to Open)



Face of Air Supply (Air to Shut)



NOTE.

- Operation of permission pressure: 0.4~0.6MPa G  
Air to open : 25~50mm<sup>2</sup> : 0.45~0.6MPa G  
(only fluid pressure is 0)
- Double Acting : Valve open : Port (a) Exhaust  
Port (b) Supply  
Valve shut : Port (a) Supply  
Port (b) Exhaust  
Air To Open : Valve open : Port (b) Supply  
Valve shut : Port (b) Exhaust  
Air To Shut : Valve open : Port (a) Exhaust  
Valve shut : Port (a) Supply
- Diaphragms except EPDM and PTFE are available in FKM, VIFLON<sup>TM</sup>C (FKM-C), VIFLON<sup>TM</sup>F (FKM-F), CSM and NBR when required.
- The shape and appearance of assembly differ a little with nominal size compared to this drawing.

|     |                                       |   |  |                                      |
|-----|---------------------------------------|---|--|--------------------------------------|
| 165 | WASHER (A)                            | 1 | STAINLESS STEEL  | SUS304                               |
| 107 | LOCK NUT                              | 2 | STAINLESS STEEL  | SUS304                               |
| 50  | SPRING (C)                            | 1 | SPRING STEEL (SWOOSH-B)  | Used for Air to Shut                 |
| 49  | SPRING (B)                            | 1 | SPRING STEEL (SWOOSH-B)  | Used for Air to Open                 |
| 48  | SPRING (A)                            | 1 | SPRING STEEL (SWOOSH-B)  | Used for Air to Open                 |
| 47  | NIPPLE                                | 1 | COPPER ALLOY (C3604)   | Used for Air to Shut and Air to Open |
| 46  | O-RING (F)                            | 1 | NBR  |                                      |
| 45  | O-RING (E)                            | 1 | NBR  |                                      |
| 44  | O-RING (D)                            | 1 | NBR  |                                      |
| 43  | STOPPER                               | 1 | STAINLESS STEEL  | SUS304                               |
| 41  | INDICATING ROD                        | 1 | STAINLESS STEEL  | SUS304                               |
| 40  | BOLT (B)                              | 4 | STAINLESS STEEL  | SUS304                               |
| 39  | BOLT (A)                              | 8 | STAINLESS STEEL  | SUS304                               |
| 38  | CONICAL SPRING WASHER (B)             | 1 | STAINLESS STEEL  | SUS304                               |
| 37  | CYLINDER DIAPHRAGM PLATE              | 2 | STAINLESS STEEL  | SUS304                               |
| 36  | CYLINDER DIAPHRAGM                    | 1 | NBR  |                                      |
| 35c | SCREWED METAL OF CYLINDER BONNET      | 2 | STAINLESS STEEL  | SUS303                               |
| 35b | INSERTED METAL OF CYLINDER BONNET (B) | 8 | COPPER ALLOY   | C3604                                |
| 35a | INSERTED METAL OF CYLINDER BONNET (A) | 1 | STAINLESS STEEL  | SUS304                               |
| 35  | CYLINDER BONNET                       | 1 | PPG  |                                      |
| 34a | INSERTED METAL OF CYLINDER BODY       | 1 | COPPER ALLOY   | C3604                                |
| 34  | CYLINDER BODY                         | 1 | PPG  |                                      |
| 33  | COMPRESSOR PUSHING PLATE              | 1 | COPPER ALLOY   | C3604                                |
| 31  | STEM (A)                              | 1 | COPPER ALLOY   | C3604                                |
| 21  | NUT                                   | 1 | STAINLESS STEEL  | SUS304                               |
| 14  | O-RING (A)                            | 1 | EPDM   |                                      |
| 11  | GAUGE COVER                           | 1 | PC   |                                      |
| 7   | JOINT                                 | 1 | STAINLESS STEEL  | SUS304                               |
| 6   | COMPRESSOR                            | 1 | PVDF   |                                      |
| 5   | CUSHION COVER                         | 1 | <input type="checkbox"/> Nothing<br><input type="checkbox"/> PVDF  | Used for PTFE Diaphragm              |
| 4   | CUSHION                               | 1 | EPDM   | Used for PTFE Diaphragm              |
| 3a  | INSERTED METAL OF DIAPHRAGM           | 1 | STAINLESS STEEL  | SUS304                               |
| 3   | DIAPHRAGM                             | 1 | <input type="checkbox"/> EPDM<br><input type="checkbox"/> PTFE<br><input type="checkbox"/> others                              | ( )                                  |
| 1   | BODY                                  | 1 | <input type="checkbox"/> PVC<br><input type="checkbox"/> C-PVC<br><input type="checkbox"/> PP<br><input type="checkbox"/> PVDF |                                      |

| No.               | DESCRIPTION  | QTY.        | MATERIAL | REMARKS |
|-------------------|--|-------------|----------|---------|
| ITEM              | DIAPHRAGM VALVE (TYPE14) PNEUMATIC ACTUATED MODEL TYPE AN ASSY<br><input type="checkbox"/> DOUBLE ACTING, <input type="checkbox"/> AIR TO OPEN, <input type="checkbox"/> AIR TO SHUT<br>JIS 10K : FLANGED END<br>15mm (1/2") ~ 50mm (2") |             |          |         |
| DRAWN             | M.Iwakiri  | DATE        | SCALE    |         |
| CHECKED           | H.Kawano   | FEB.7.2019  |          |         |
| APPROVED          | K.Koushou  | DRAWING No. |          |         |
|                   |  | D1-AA016JE  |          |         |
| SPECIAL ORDER No. | ASAHI YUKIZAI CORPORATION  |             |          |         |