

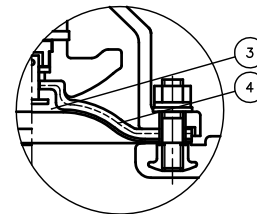
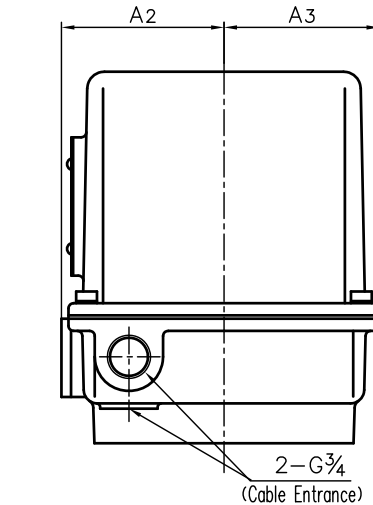
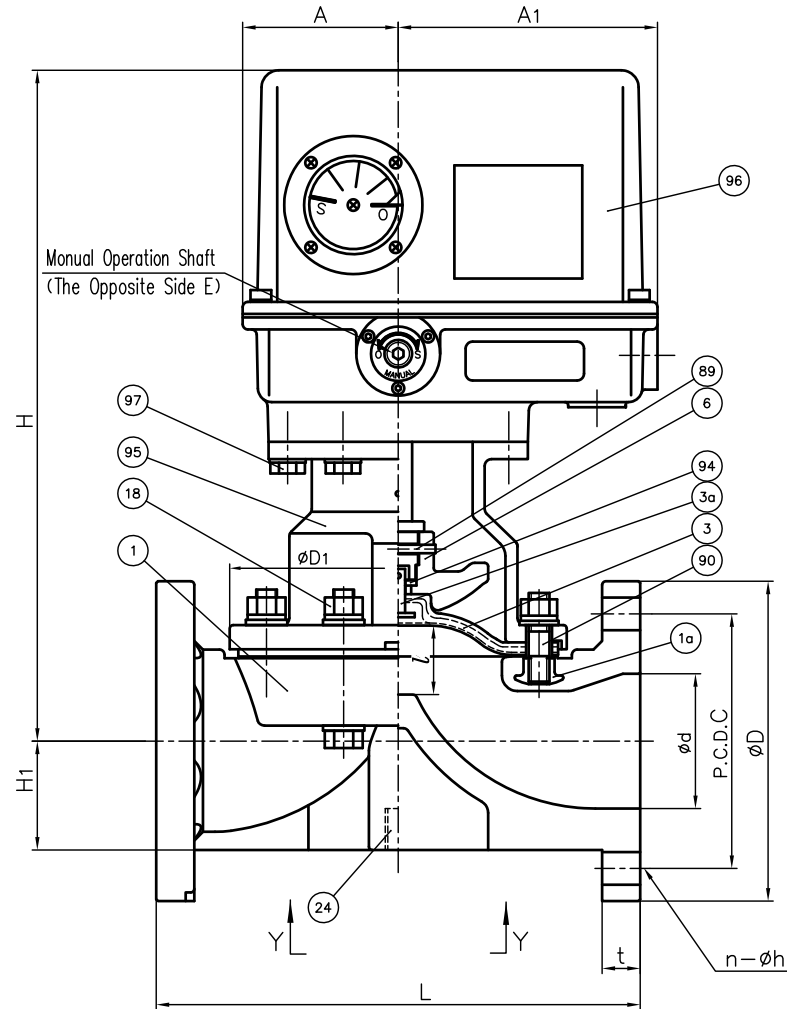
DIMENSIONS TABLE

UNIT : mm

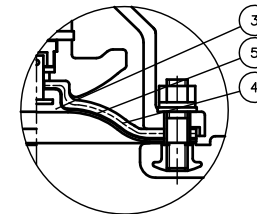
| NOMINAL SIZE | | ANSI Class 150 | | | | | D1 | L | | t | | l (LIFT) | H | H1 | A | A1 | A2 | A3 | S | S1 | S2 | E | ACTUATOR MODEL |
|--------------|-----|----------------|-----|-------|---|----|-----|------------------|-------------|-----------|---------|----------|-----|----|----|-----|----|----|-----|-----|----|---|----------------|
| | | d | D | C | n | h | | GRINNEL STANDARD | AV STANDARD | PVC C-PVC | PP PVDF | | | | | | | | | | | | |
| 65mm | 2½" | 67 | 178 | 139.5 | 4 | 19 | 175 | - | 250 | 22 | 23 | 34 | 371 | 61 | 90 | 150 | 94 | 90 | 85 | M8 | 15 | 5 | ED-21H |
| 80 | 3 | 78 | 191 | 152.5 | 4 | 19 | 199 | 263.5 | 280 | 22 | 23 | 42 | 388 | 63 | 90 | 150 | 94 | 90 | 100 | M12 | 22 | 5 | ED-21H |
| 100 | 4 | 100 | 229 | 190.5 | 8 | 19 | 239 | 328.5 | 340 | 22 | 24 | 50 | 418 | 78 | 90 | 150 | 94 | 90 | 120 | M12 | 22 | 5 | ED-21H |

NOTE.

- Diaphragms except EPDM and PTFE are available in FKM, VIFLON® C (FKM-C), VIFLON® F (FKM-F), CSM and NBR when required.
- The shape and appearance of assembly differ a little with nominal size compared to this drawing.

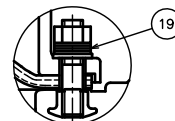


In case material of diaphragm is PTFE

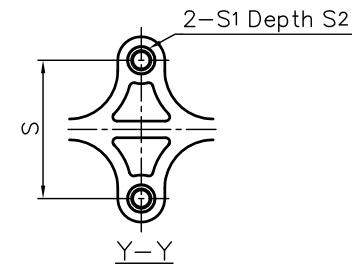


In case material of diaphragm is PTFE with cushion cover

In Case of PVDF Body



Part "B"



| No. | DESCRIPTION | QTY. | MATERIAL | REMARKS |
|-----|-----------------------------|-------|--|----------------------------|
| 1a | INSERTED NUT | 4 | COPPER ALLOY (C3604) | Used for PVC,C-PVC,PP Body |
| | | | STAINLESS STEEL (SUS304) | Used for PVDF Body |
| 97 | BOLT · WASHER (D) | 6Sets | STAINLESS STEEL (SUS304) | |
| 96 | ACTUATOR | 1 | CAST ALUMINIUM ALLOY (AC2A etc.) | Melamin Baking Coat |
| 95 | BONNET | 1 | CAST ALUMINIUM ALLOY (AC4A) | Epoxy Coat |
| 94 | METAL OF COMPRESSOR | 1 | STAINLESS STEEL (SUS304) | |
| 90 | STUD BOLT · NUT | 4Sets | STAINLESS STEEL (SUS304) | |
| 89 | COMPRESSOR PIN | 1 | STAINLESS STEEL (SUS304) | |
| 24 | ENSAT FOR BODY | 2 | COPPER ALLOY (Equal to C3603) | |
| 19 | CONICAL SPRING WASHER (A) | 8Sets | STAINLESS STEEL (SUS304) | Used for PVDF Body |
| 18 | BOLT · NUT (A) | 4Sets | STAINLESS STEEL (SUS304) | |
| 6 | COMPRESSOR | 1 | PVDF | |
| 5 | CUSHION COVER | 1 | <input type="checkbox"/> Nothing <input type="checkbox"/> PVDF | Used for PTFE Diaphragm |
| 4 | CUSHION | 1 | EPDM | |
| 3a | INSERTED METAL OF DIAPHRAGM | 1 | STAINLESS STEEL (SUS304) | |
| 3 | DIAPHRAGM | 1 | <input type="checkbox"/> EPDM <input type="checkbox"/> PTFE <input type="checkbox"/> Others () | |
| 1 | BODY | 1 | <input type="checkbox"/> PVC <input type="checkbox"/> C-PVC <input type="checkbox"/> PP <input type="checkbox"/> PVDF | |

| ITEM | DIAPHRAGM VALVE (TYPE14) ELECTRIC MODEL TYPE H ASS'Y ANSI Class 150 : FLANGED END 65mm (2½") ~ 100mm (4") | | |
|-------------------|---|----------------------------|-------|
| DRAWN | M.Iwakiri | DATE | SCALE |
| CHECKED | H.Kawano | AUG.15.2019 | |
| APPROVED | K.Koushou | DRAWING No. D1-AE002AEm | |
| SPECIAL ORDER No. | ASAHI YUKIZAI CORPORATION | | |