

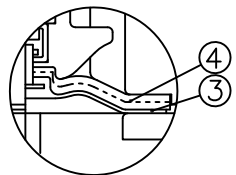
DIMENSIONS TABLE

NOMINAL SIZE	d	DIN PN10					D ₁	L	t	l (LIFT)	H	H ₁	A	A ₁	A ₂	S	S ₁	S ₂	ACTUATOR MODEL
		D	C	n	h														
15 ^{mm} 1/2"	16	95	65	4	14	54×66	130	12	10	406	19.5	101	81	140	25	M5	10	PSN-1	
20 3/4"	20	105	75	4	14	54×66	150	13	10	408	17.5	101	81	140	25	M5	10	PSN-1	
25 1"	25	115	85	4	14	67×80	160	13	12	413	18.5	101	81	140	25	M5	10	PSN-1	
32 1 1/4"	32	140	100	4	18	67×80	180	16	12	416	22.5	101	81	140	25	M5	10	PSN-1	
40 1 1/2"	40	150	110	4	18	110×110	200	20	21	464	27.5	110	90	150	45	M6	14	PSN-3	
50 2"	52	165	125	4	18	123×123	230	22	25	473	36	110	90	150	45	M6	14	PSN-3	

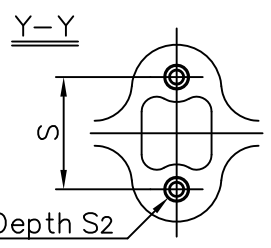
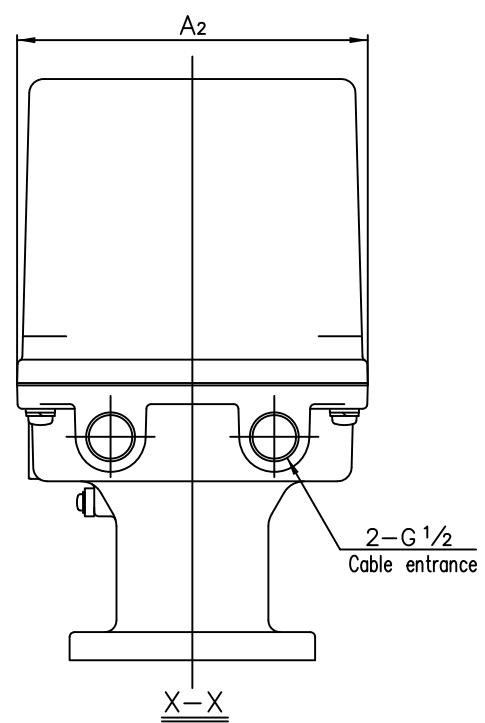
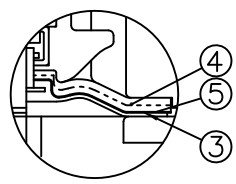
UNIT : mm

NOTE. 1. ③ Diaphragms except EPDM and PTFE are available in FKM, VIFLON® C (FKM-C), VIFLON® F (FKM-F), CSM and NBR when required.
 2. The shape and appearance of assembly differ a little with nominal size compared to this drawing.

In case material of diaphragm is PTFE



PTFE diaphragm with cushion cover



134	SCREW (F)	2	STAINLESS STEEL (SUS304)	
133	INDICATOR PLATE	1	STAINLESS STEEL (SUS304)	
132	O-RING (K)	1	NBR	
131	O-RING (J)	1	NBR	
130	BOLT (F)	2	STAINLESS STEEL (SUS304)	
129	BOLT · NUT (F)	4sets	STAINLESS STEEL (SUS304)	
128	BOLT · NUT (E)	4sets	STAINLESS STEEL (SUS304)	
127	JOINT	1	COPPER ALLOY (C3604)	
126	INDICATOR SEAL	1	ACRYL	
125	STEM (D)	1	COPPER ALLOY (C3604)	
124	STAND (A)	1	STAINLESS STEEL (SUS304)	
123	SPACER (A)	1	PVC	
96	ACTUATOR	1	ALUMINIUM etc.	acryl coat.
95	BONNET	1	CAST ALUMINIUM ALLOY (AC4C)	epoxy coat.
24	ENSAT FOR BODY	2	COPPER ALLOY (equal to C3603)	
18	BOLT&NUT (A)	4sets	STAINLESS STEEL (SUS304)	
7	JOINT	1	STAINLESS STEEL (SUS304)	
6	COMPRESSOR	1	PVDF	
5	CUSHION COVER ¹⁾	1	□ nothing (standard) □ PVDF	¹⁾ used for PTFE diaphragm
4	CUSHION ¹⁾	1	EPDM	
3a	INSERTED METAL OF DIAPHRAGM	1	STAINLESS STEEL (SUS304)	
3	DIAPHRAGM	1	□ EPDM □ PTFE □ others ()	
1	BODY	1	□ PVC □ C-PVC □ PP □ PVDF	
No.	DESCRIPTION	No.REQ'D	MATERIAL	REMARKS
DIAPHRAGM VALVE (TYPE14) ELECTRIC MODEL TYPE M ASS'Y DIN PN10 : FLANGED END 15 ^{mm} (1/2") ~ 50 ^{mm} (2") with E-E POSITIONER				
DRAWN	M.Iwakiri	DATE	SCALE	
CHECKED	H.Kawano	FEB.12.2019		
APPROVED	K.Koushou	DRAWING No.		
SPECIAL ORDER No.	D1-AE003DE ③			
ASAHI YUKIZAI CORPORATION				