

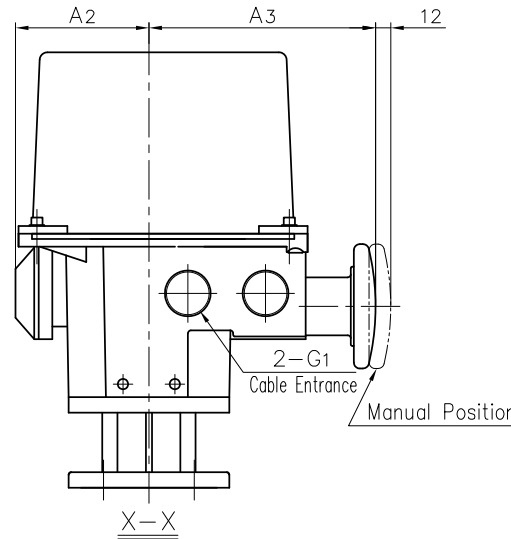
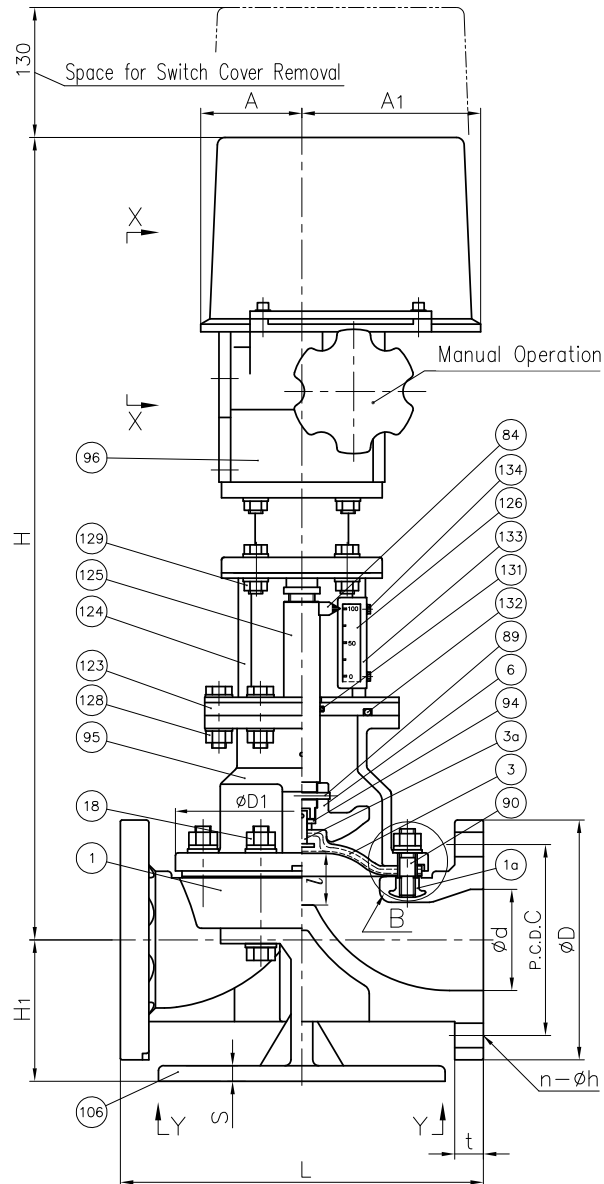
DIMENSIONS TABLE

UNIT : mm

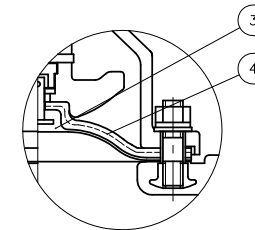
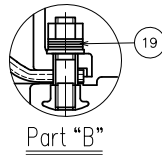
NOMINAL SIZE	d	DIN PN10					D1	L	t		l (LIFT)	H	H1	A	A1	A2	A3	S	S1	S2	S3	S4	S5	ACTUATOR MODEL
		D	C	n	h	PVC C-PVC			PP PVDF															
65mm 2½"	67	185	145	4	18	175	290	22	23	34	608	98	79	137	103	177	12	155	190	160	190	19	CSP-471	
80	78	200	160	8	18	199	310	22	23	42	625	109	79	137	103	177	12	180	220	175	215	19	CSP-771	
100	100	220	180	8	18	239	350	22	24	50	655	119	79	137	103	177	15	230	270	220	260	19	CSP-771	

NOTE.

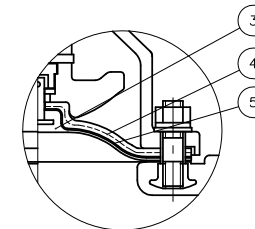
- Diaphragms except EPDM and PTFE are available in FKM, VIFLON® C (FKM-C), VIFLON® F (FKM-F), CSM and NBR when required.
- The shape and appearance of assembly differ a little with nominal size compared to this drawing.



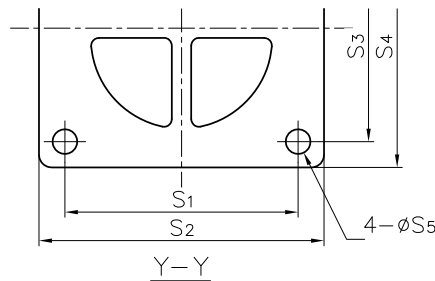
In Case of PVDF Body



In case material of diaphragm is PTFE.



In case material of diaphragm is PTFE with cushion cover.



No.	DESCRIPTION	QTY.	MATERIAL	REMARKS
1a	INSERTED NUT	4	COPPER ALLOY (C3604) STAINLESS STEEL (SUS304)	Used for PVC,C-PVC,PP Body Used for PVDF Body
134	SCREW (F)	2	STAINLESS STEEL (SUS304)	
133	INDICATOR PLATE	1	STAINLESS STEEL (SUS304)	
132	O-RING (K)	1	NBR	
131	O-RING (J)	1	NBR	
129	BOLTO · NUT (F)	4Sets	STAINLESS STEEL (SUS304)	
128	BOLTO · NUT (E)	6Sets	STAINLESS STEEL (SUS304)	
126	INDICATOR SEAL	1	ACRYL	
125	STEM (D)	1	COPPER ALLOY (C3604)	
124	STAND (A)	1	STAINLESS STEEL (SUS304)	
123	SPACER (A)	1	PVC	
106	STAND	1	STAINLESS STEEL (SUS304) CAST ALUMINIUM ALLOY (AC4C) (Epoxy Coat)	Used for Size 65mm Used for Size 80,100mm
96	ACTUATOR	1	ALUMINIUM etc.	
95	BONNET	1	CAST ALUMINIUM ALLOY (AC4A)	Epoxy Coat
94	METAL OF COMPRESSOR	1	STAINLESS STEEL (SUS304)	
90	STUD BOLT · NUT	4Sets	STAINLESS STEEL (SUS304)	
89	COMPRESSOR PIN	1	STAINLESS STEEL (SUS304)	
84	INDICATOR	1	STAINLESS STEEL (SUS304)	
19	CONICAL SPRING WASHER (A)	8Sets	STAINLESS STEEL (SUS304)	Used for PVDF Body
18	BOLT · NUT (A)	4Sets	STAINLESS STEEL (SUS304)	
6	COMPRESSOR	1	PVDF	
5	CUSHION COVER	1	<input type="checkbox"/> Noting <input type="checkbox"/> PVDF	Used for PTFE Diaphragm
4	CUSHION	1	EPDM	
3a	INSERTED METAL OF DIAPHRAGM	1	STAINLESS STEEL (SUS304)	
3	DIAPHRAGM	1	<input type="checkbox"/> EPDM <input type="checkbox"/> PTFE <input type="checkbox"/> Others ()	
1	BODY	1	<input type="checkbox"/> PVC <input type="checkbox"/> C-PVC <input type="checkbox"/> PP <input type="checkbox"/> PVDF	

ITEM	DIAPHRAGM VALVE (TYPE14) ELECTRIC MODEL TYPE M ASS'Y DIN PN10 : FLANGED END 65mm (2½") ~ 100mm (4") with E-P POSITIONER		
DRAWN	M.Iwakiri	DATE	SCALE
CHECKED	H.Kawano	AUG.15.2019	~
APPROVED	K.Koushou	DRAWING No.	
		D1-AE004DE	
SPECIAL ORDER No.	ASAHI YUKIZAI CORPORATION		