

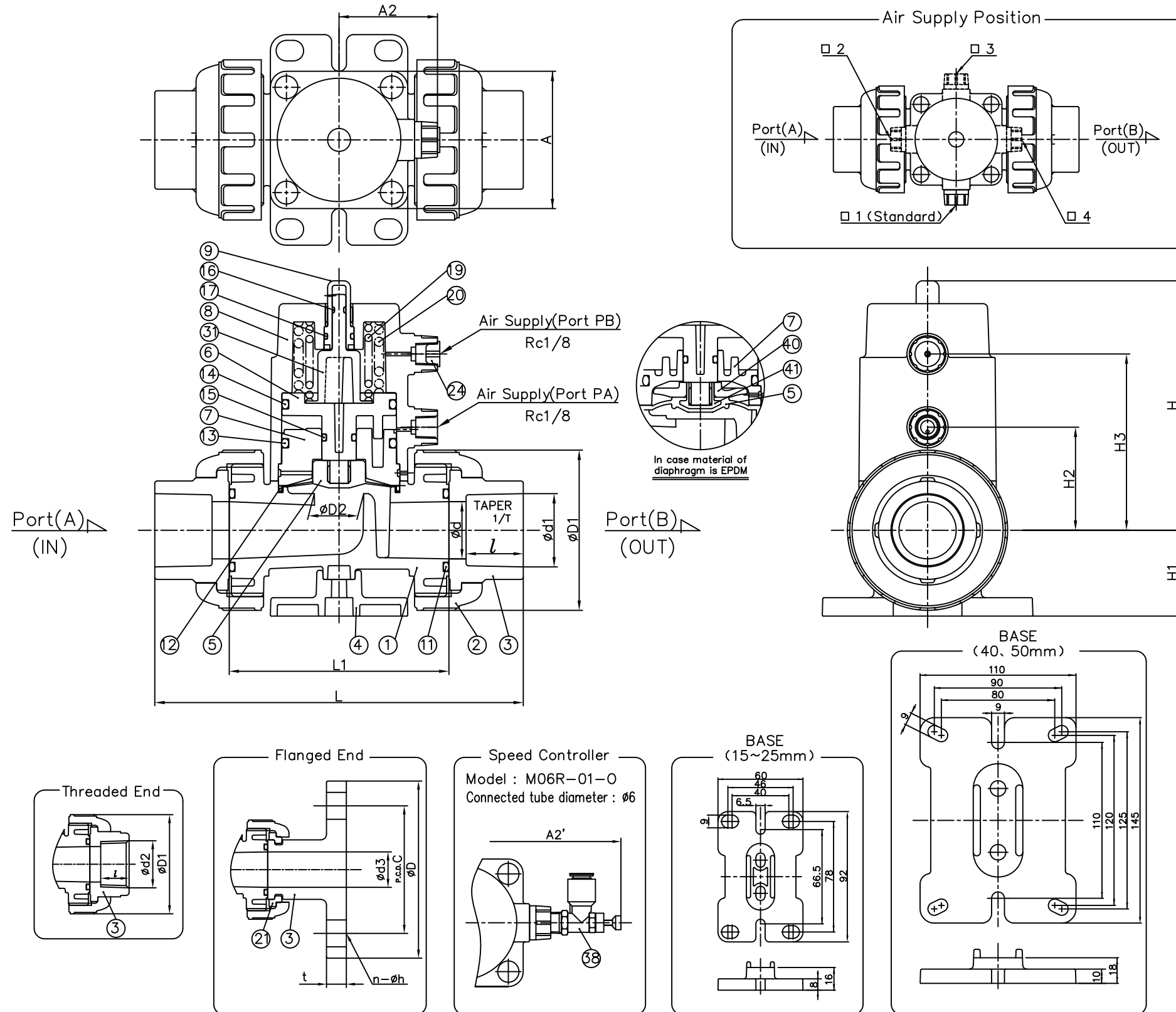
DIMENSIONS TABLE

UNIT:mm

NOMINAL SIZE	d	SOCKET END					THREADED END			FLANGED END							L1	D1	D2	H	H1	H2	H3	A	A2	A2' (MAX)
		U-PVC					U-PVC			U-PVC JIS 10K																
		d1	l	1/T	L		d2	l	L	d3	D	C	n	h	L	t										
15 ^{mm}	1/2"	15.5	22.11	20	1/34	124.4	Rc1/2	15	117.0	15	95	70	4	15	158.0	12	79.0	48	16	79.0	33.0	33	60	□50	38	71
20	3/4	20.5	26.13	24	1/34	147.0	Rc3/4	17	139.0	20	100	75	4	15	191.0	14	88.0	60	22	108.0	36.5	44	76	□60	43	76
25	1	25	32.16	27	1/34	163.5	Rc 1	20	149.5	25	125	90	4	19	205.5	14	94.5	70	22	109.0	37.5	45	77	□60	43	76
40 ^{mm}	1 1/2	40	48.21	37	1/37	241.0	Rc1 1/2	25	215.0	40	140	105	4	19	264.0	16	146.0	100	40	161.5	53.0	68	115	□95	60	93.5
50 ^{mm}	2	50	60.25	42	1/37	283.0	Rc 2	28	260.0	50	155	120	4	19	297.0	16	177.0	126	50	188.5	66.0	83	137	□115	70.5	103.5

NOTE

- Operating pressure : Air To Open : 0.4MPa - 0.5MPa
Double Acting : 0.3MPa - 0.4MPa
- Air To Open : Valve Open : Port(PA) Supply
Valve Close : Port(PB) Exhaust
Double Acting : Valve Open : Port(PA) Supply,Port(PB) Exhaust
Valve Close : Port(PA) Exhaust,Port(PB) Supply
- Choose a position of Air Supply and Speed Controller
- The shape and appearance of assembly differ a little with nominal size compared to this drawing.
- The diaphragm material of 40mm and 50mm is only PTFE.



41	INSERTED METAL OF DIAPHRAGM	1	STAINLESS STEEL (SUS304)	Used For EPDM diaphragm
40	COMPRESSOR	1	PVDF	Used For EPDM diaphragm
38	SPEED CONTROLLER	1	POM/ COPPERALLOY (C3604BD)	Air To Open □ Attached □ Nothing
		2		Double Acting □ Attached □ Nothing
31	INDICATOR (A)	1	40 ^{mm} and 50 ^{mm} : PP 15 ^{mm} thru. 25 ^{mm} : ABS	
30	NUT	4	STAINLESS STEEL (SUSXM7)	Does Not Figure
29	SPRING WASHER	4		
28	WASHER	4		
26	BOLT (B)	2		
25	BOLT (A)	4		
24	PLUG	1	EPDM	Used For Air To Open
22	CAP(A)	8		Does Not Figure
21	STOP RING	2	PVDF	Used For Flanged End
20	SPRING (B) 1)	1	STAINLESS STEEL (SUS304)	Used For Air To Open
19	SPRING (A)	1		1) used for size : 20~50 ^{mm} used for size : 15~25 ^{mm}
17	O-RING (G)	1	□ EPDM □ FKM □ FKM-F	
16	O-RING (F)	1		
15	O-RING (E)	1		
14	O-RING (D)	1		
13	O-RING (C)	1		
12	O-RING (B)	1		
11	O-RING (A)	2		Used For PTFE diaphragm
9	GAUGE COVER (A)	1	PC	
8	CYLINDER BODY	1		
7	BUSH	1	PPSG	
6	PISTON	1		
5	DIAPHRAGM	1	□ PTFE □ EPDM	
4	BASE	1		
3	END CONNECTOR	2	PVC	
2	UNION NUT	2		
1	BODY	1		

No.	DESCRIPTION	No.REQ'D	MATERIAL	REMARKS
DIAPHRAGM VALVE TYPE16 PNEUMATIC ACTUATED MODEL TYPE AD ASS'Y				
□AIR TO OPEN , □DOUBLE ACTING				
JIS : □SOCKET END , □THREADED END , □FLANGED END				
15 ^{mm} (1/2") ~ 50 ^{mm} (2")				
DRAWN	S.Hagihara	DATE	MAY.18.2007	SCALE
CHECKED	T.Hanada	DRAWING No.		
APPROVED	K.Ohnishi	D6-AA001JE		
SPECIAL ORDER No.	ASAHI YUKIZAI CORPORATION			