

DIMENSIONS TABLE

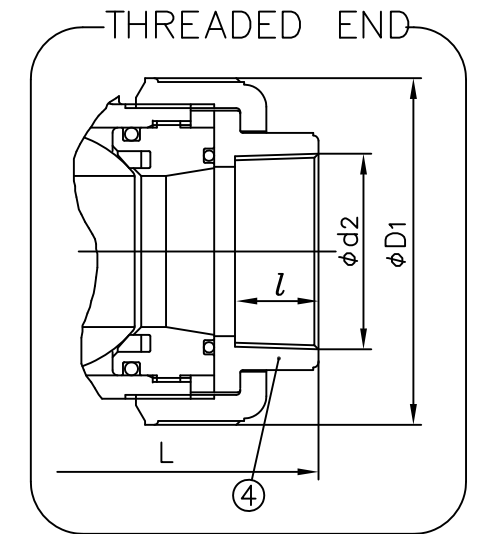
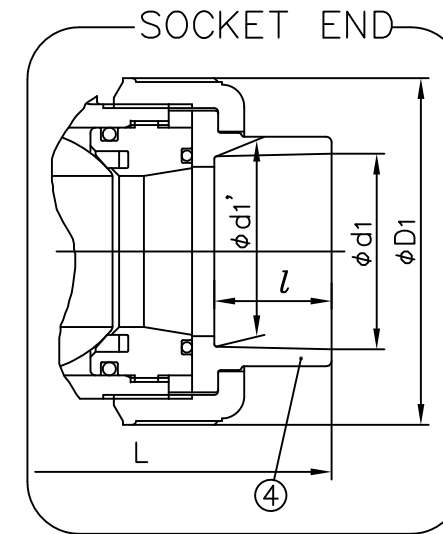
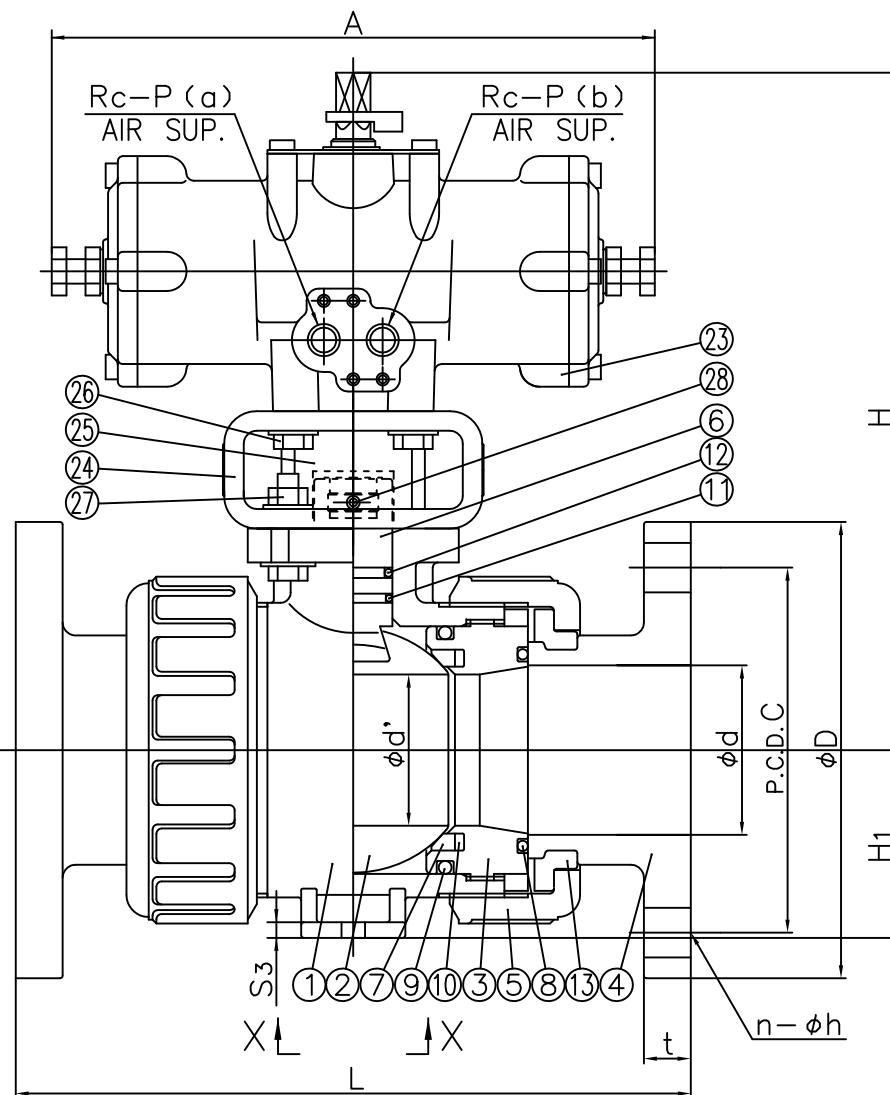
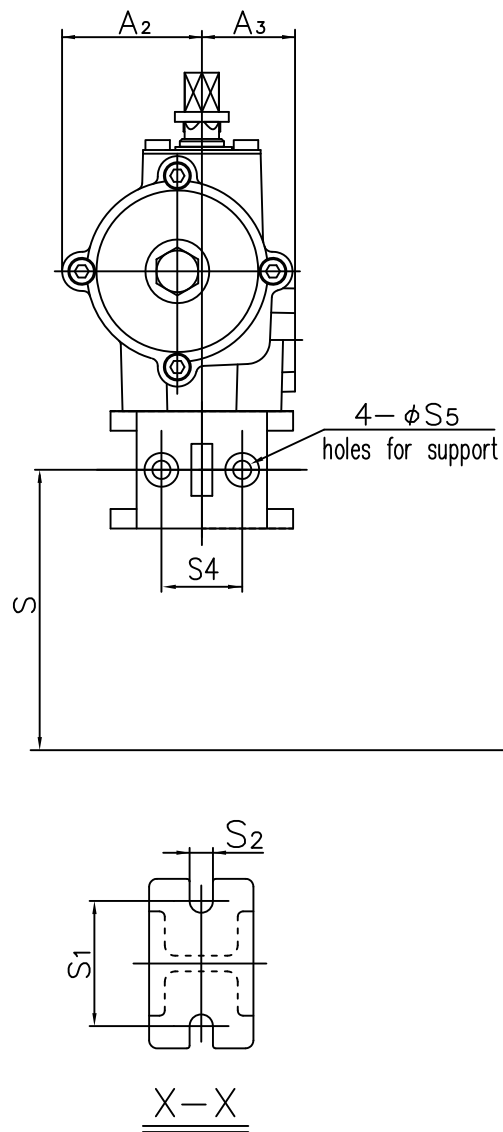
NOMINAL SIZE	FLANGED END								SOCKET END (IPS)								THREADED END								
	ANSI Class 150				L				PVC, C-PVC				PP, PVDF				d <sub>2</sub>	l	L						
	D	C	n	h	U-PVC	PP	PVDF	t	ASTM SCH40		ASTM SCH80		L	d <sub>1</sub>	l	PP			PVDF	U-PVC	PP	PVDF			
					C-PVC				d <sub>1</sub>	d <sub>1</sub> '	l	L											d <sub>1</sub>	d <sub>1</sub> '	l
65mm 2 1/2"	178	139.5	4	19	259	257	256	18	—	—	—	—	73.381	72.847	44.5	240	73.125	44.5	238	237	2 1/2 -8 NPT	32	215	213	212
80	3	191	152.5	4	19	306	305	302	18	—	—	—	89.306	88.697	47.6	283	88.392	47.6	282	279	3 -8 NPT	35	265	264	261
100	4	229	190.5	8	19	374	374	369	18	114.757	114.071	50.8	352	—	—	—	113.792	57.2	365	359	4 -8 NPT	45	362	362	357

UNIT: mm

NOMINAL SIZE	d	d'	D <sub>1</sub>	H	H <sub>1</sub>	A	A <sub>2</sub>	A <sub>3</sub>	S	S <sub>1</sub>	S <sub>2</sub>	S <sub>3</sub>	S <sub>4</sub>	S <sub>5</sub>	P	ACTUATOR MODEL
65mm 2 1/2"	65	58	133	268	72	250	57	38	107.5	48	9	6	32	7	1/4	TA2A-063D
80	78	68.5	152	277	85	290	57	38	116.5	55	11	7	32	7	1/4	TA2A-063D
100	100	90	210	348	110	292	71	45	151.5	65	11	8	42	9	1/4	TA2A-080D

- NOTES. 1. Operating pressure 0.4MPa G  
 Valve open : Part (a) Exhaust Part (b) Supply  
 Valve shut : Part (a) Supply Part (b) Exhaust  
 2. The shape and appearance of assembly differ a little with nominal size compared to this drawing.

FLANGED END



28	SCREW (B)	2	STAINLESS STEEL (SUS304)	
27	BOLT · NUT (B)	4 sets	STAINLESS STEEL (SUS304)	
26	BOLT (A)	4	STAINLESS STEEL (SUS304)	
25	JOINT	1	COPPER ALLOY (C3604)	
24	STAND	1	PPG	
23	ACTUATOR	1	ALUMINIUM ALLOYS DIE CASTINGS (ADC12) etc.	meramin baking coat.
13	STOP RING	2	PVDF	used for flanged end.
12	O-RING (E)	1	□ EPDM	
11	O-RING (D)	1	□ FKM	
10	CUSHION	2	□ FKM	
9	O-RING (B)	1	□ Others	
8	O-RING (A)	2	( )	
7	SEAT	2	PTFE	
6	STEM	1	□ PVC	
5	UNION NUT	2	□ C-PVC	
4	END CONNECTOR	2	□ C-PVC	
3	CARRIER	1	□ PP	
2	BALL	1		
1	BODY	1	□ PVDF	

No.	DESCRIPTION	No.REQ'D	MATERIAL	REMARKS
BALL VALVE (TYPE 21) PNEUMATIC MODEL TA TYPE ASS'Y DOUBLE ACTING ANSI : □ FLANGED END, □ SOCKET END, □ THREADED END 65mm (2 1/2") ~ 100mm (4")				
DRAWN	E.Enmei	DATE	SCALE	
CHECKED	T.Iwamoto	JUN.17.2004	DRAWING No.	
APPROVED	T.Hayasi	IB-AA002AEm		
SPECIAL ORDER No.	ASAHI YUKIZAI CORPORATION			