

DIMENSIONS TABLE

NOMINAL SIZE	d	FLANGED END								SOCKET END						THREADED END				SPIGOT END							
		DIN PN10				L		t	PVC, C-PVC			PP, PVDF			d2	l	L		PVC			PP, PVDF			L		
		D	C	n	h	PVC C-PVC	PP PVDF		d1	l	L	d1	d1'	l			L	PVC C-PVC	PP PVDF	d3	d3'	l	d3	l		t1	
15mm 1/2"	15	95	65	4	14	130	130	12	20	16	102	19.5	19.3	14.5	99	Rp 1/2	15	102	100	20	15	18.5	20	18.5	2.5	1.9	124
20 3/4"	20	105	75	4	14	150	150	14	25	19	119	24.5	24.3	16	113	Rp 3/4	17	120	119	25	20	24	25	22	2.7	1.9	144
25 1"	25	115	85	4	14	160	160	14	32	22	131	31.5	31.3	18	123	Rp 1	20	131	130	32	25	24.5	32	22.5	3.0	2.4	154
32 1 1/4"	32	140	100	4	18	180	180	16	40	26	150	39.45	39.2	20.5	139	Rp 1 1/4	22	150	146	40	31	28	40	26	3.7	2.4	174
40 1 1/2"	40	150	110	4	18	200	200	16	50	31	164	49.45	49.2	23.5	149	Rp 1 1/2	25	163	160	50	40	34	50	32	4.6	3.0	194
50 2"	51	165	125	4	18	230	230	16	63	38	197	62.5	62.1	27.5	176	Rp 2	28	197	194	63	51	38	63	36	5.8	3.0	224

UNIT : mm

NOMINAL SIZE	D1	H	H1	A	A2	A3	S1	S2	S3	P	ACTUATOR MODEL
15 1/2"	48	159.5	29	110	25	32	19	7.3	11	1/8	TA2A-0402D
20 3/4"	60	166	35	110	25	32	19	7.3	11	1/8	TA2A-0402D
25 1"	70	173	39	110	25	32	19	7.3	11	1/8	TA2A-0402D
32 1 1/4"	82	182	47	110	25	32	30	9	15	1/8	TA2A-0402D
40 1 1/2"	100	224	55	210	46	36	30	9	15	1/4	TA2A-050D
50 2"	126	235.5	66	210	46	36	30	9	15	1/4	TA2A-050D

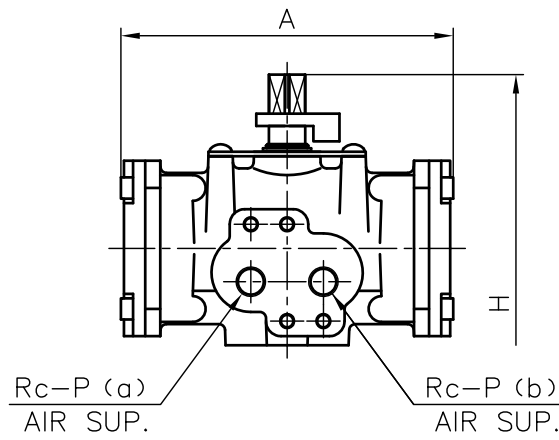
MODEL CLASSIFICATION TABLE

TYPE	MATERIAL
21ALPHA	PVC C-PVC
21	PP PVDF

NOTE.

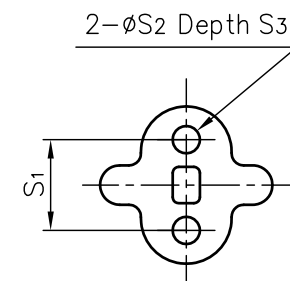
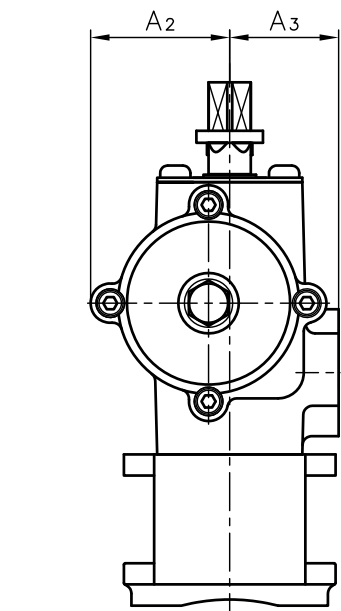
- Operating pressure 0.4~0.6MPa G
- Valve open : Part (a) Exhaust, Part (b) Supply  
Valve shut : Part (a) Supply, Part (b) Exhaust
- The shape and appearance of assembly differ a little with nominal size and material compared to this drawing.

Appearance of TA2A-0402D

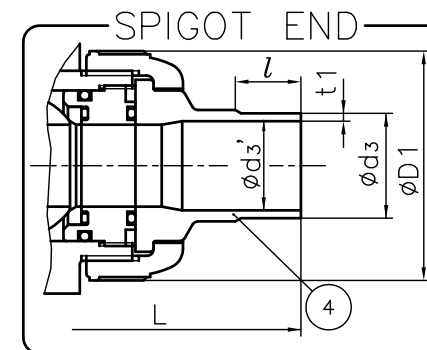
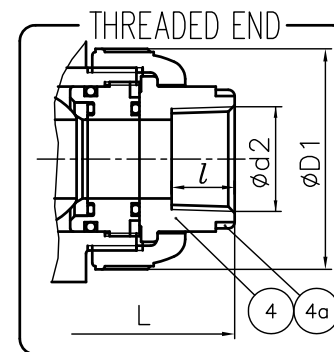
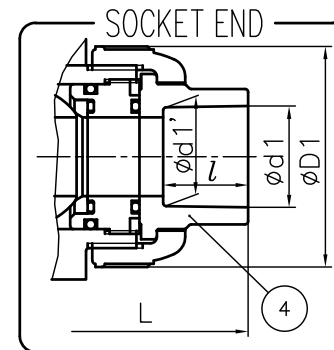
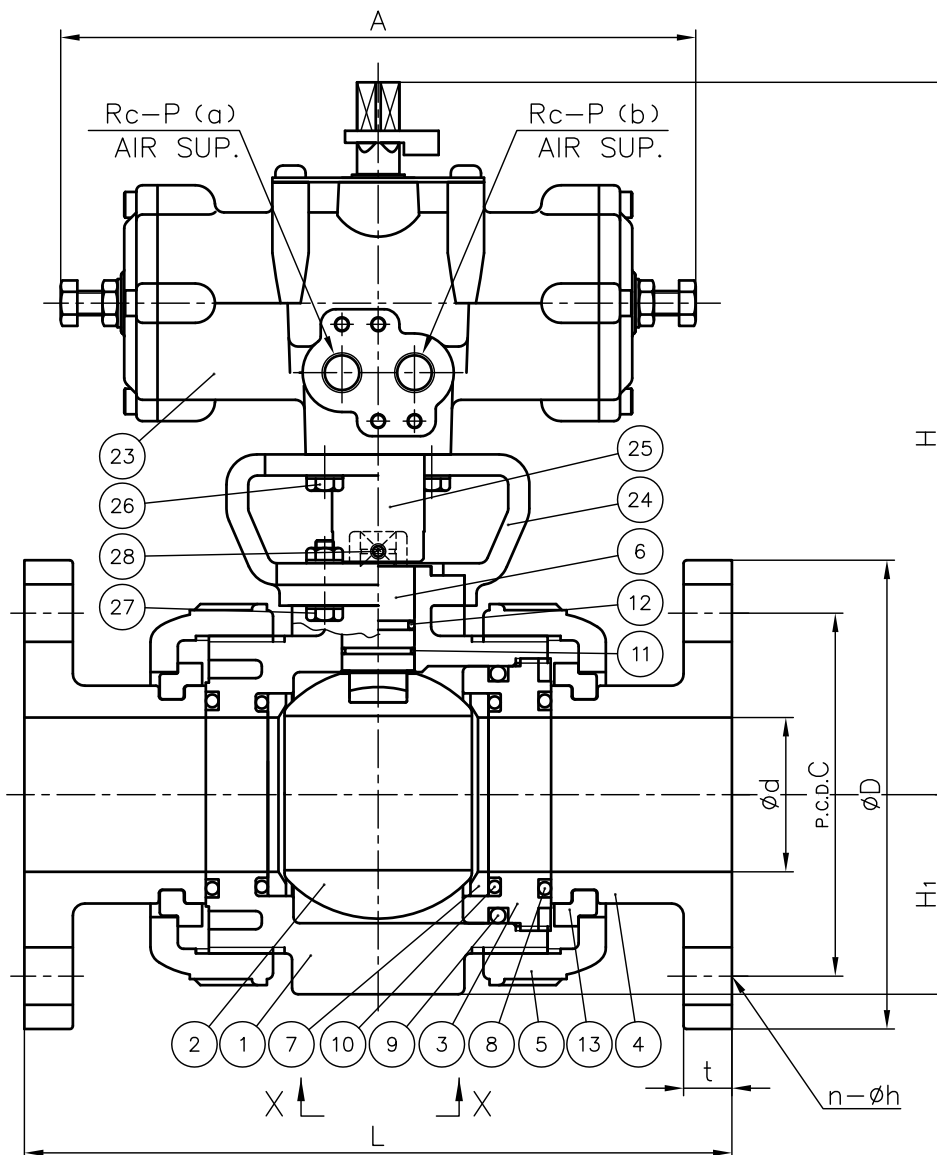


FLANGED END

40mm (1 1/2") · 50mm (2")



(Detail of Holes for Metallic Insert.)



No.	DESCRIPTION	QTY.	MATERIAL	REMARKS
4a	RING	2	STAINLESS STEEL (SUS304)	Used for C-PVC Body. Threaded End: 15~25mm
28	SCREW (B)	2	STAINLESS STEEL (SUS304)	
27	BOLT · NUT (B)	4sets	STAINLESS STEEL (SUS304)	
26	BOLT (A)	4	STAINLESS STEEL (SUS304)	
25	JOINT	1	COPPER ALLOY (C3604)	
24	STAND	1	PPG	
23	ACTUATOR	1	ALUMINIUM ALLOYS DIE CASTINGS (ADC12) etc.	Melamine Baking Coat.
13	STOP RING	2	PVDF	Used for Flanged End
12	O-RING (E)	1		
11	O-RING (D)	1	□EPDM	
10	O-RING (C)	2	□FKM	
9	O-RING (B)	1	□Others	
8	O-RING (A)	2	( )	
7	SEAT	2	PTFE	
6	STEM	1		
5	UNION NUT	2	□PVC	
4	END CONNECTOR	2	□C-PVC	
3	CARRIER	1	□PP	
2	BALL	1	□PVDF	
1	BODY	1		
BALL VALVE (TYPE21 · 21ALPHA) PNEUMATIC MODEL TA TYPE ASS'Y DOUBLE ACTING DIN: □FLANGED END, □SOCKET END, □THREADED END, □SPIGOT END 15mm (1/2") ~ 50mm (2")				
DRAWN	M.Oosako	DATE	SCALE	
CHECKED	H.Kawano	FEB.01.2010	DRAWING No.	
APPROVED	Y.Ozaki	IB-AA157DE		△
SPECIAL ORDER No.		ASAHI YUKIZAI CORPORATION		