

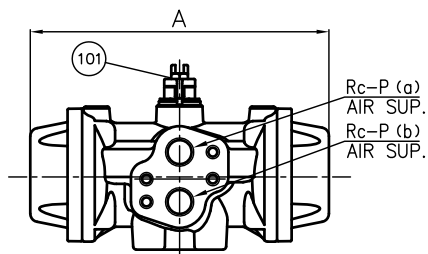
DIMENSIONS TABLE

| Nominal Size | d | FLANGED END | | | | | | SOCKET END | | | | | | THREADED END | | | | | |
|--------------|-------|----------------|-----|-------|---|----|-----|----------------|------------------|-------|---------|----------------|-------|----------------|-----|-----------------|----|-----|-----|
| | | ANSI Class 150 | | | | | | PVC,C-PVC | | | PP,PVDF | | | d ₂ | l | L | | | |
| | | D | C | n | h | L | t | ASTM SCH80 | | | | | | | | | | | |
| | | | | | | | | d ₁ | d ₁ ' | l | L | d ₁ | l | | | | L | | |
| 15mm | 1/2" | 15 | 89 | 60.5 | 4 | 16 | 143 | 12 | 21.54 | 21.23 | 22.22 | 113 | 20.96 | 22.2 | 112 | 1/2-14NPT | 15 | 102 | 100 |
| 20 | 3/4 | 20 | 98 | 70 | 4 | 16 | 172 | 14 | 26.87 | 26.57 | 25.40 | 129 | 26.16 | 25.4 | 127 | 3/4-14NPT | 17 | 120 | 119 |
| 25 | 1 | 25 | 108 | 79.5 | 4 | 16 | 187 | 14 | 33.65 | 33.27 | 28.58 | 145 | 33.02 | 28.6 | 143 | 1-11 1/2NPT | 20 | 131 | 130 |
| 32 | 1 1/4 | 32 | 117 | 89 | 4 | 16 | 190 | 16 | 42.42 | 42.04 | 31.75 | 164 | 41.91 | 31.8 | 160 | 1 1/4-11 1/2NPT | 22 | 150 | 146 |
| 40 | 1 1/2 | 40 | 127 | 98.5 | 4 | 16 | 212 | 16 | 45.56 | 48.11 | 34.93 | 184 | 48.01 | 34.9 | 179 | 1 1/2-11 1/2NPT | 25 | 163 | 160 |
| 50 | 2 | 51 | 152 | 120.5 | 4 | 19 | 234 | 16 | 60.63 | 60.17 | 38.10 | 209 | 59.94 | 38.1 | 204 | 2-11 1/2NPT | 28 | 197 | 194 |

MODEL CLASSIFICATION TABLE

| TYPE | MATERIAL |
|---------|--------------|
| 21ALPHA | PVC C-PVC |
| 21 | PP PVDF |

Appearance of PPW



Rc-P (a)
AIR SUP.
Rc-P (b)
AIR SUP.

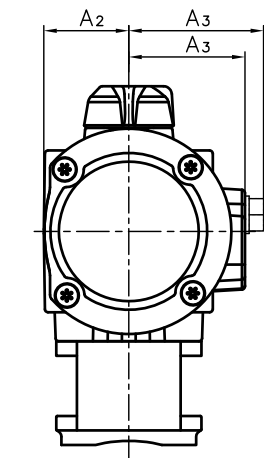
Unit : mm

| Nominal Size | Double Acting | | | | | | Air to Open | | | | | ACTUATOR TYPE | | | | | | |
|--------------|----------------|-----|-------|----------------|----------------|---------------|-------------|-------|----------------|----------------|------------------|---------------|----------------|----------------|----------------|----------------|----|-----|
| | D ₁ | H | A | A ₂ | A ₃ | ACTUATOR TYPE | H | A | A ₂ | A ₃ | A ₃ ' | ACTUATOR TYPE | H ₁ | S ₁ | S ₂ | S ₃ | P | |
| 15mm | 1/2" | 48 | 159 | 144 | 28 | 42 | PPW | 172 | 157 | 31 | 48 | 57 | PP00S | 29 | 19 | 7.3 | 11 | 1/4 |
| 20 | 3/4 | 60 | 165.5 | 144 | 28 | 42 | PPW | 178.5 | 157 | 31 | 48 | 57 | PP00S | 35 | 19 | 7.3 | 11 | 1/4 |
| 25 | 1 | 70 | 172.5 | 144 | 28 | 42 | PPW | 185.5 | 157 | 31 | 48 | 57 | PP00S | 39 | 19 | 7.3 | 11 | 1/4 |
| 32 | 1 1/4 | 82 | 181.5 | 144 | 28 | 42 | PPW | 194.5 | 157 | 31 | 48 | 57 | PP00S | 47 | 30 | 9 | 15 | 1/4 |
| 40 | 1 1/2 | 100 | 203 | 157 | 31 | 48 | PP00 | 224 | 230 | 41 | 56 | 65 | PP10S | 55 | 30 | 9 | 15 | 1/4 |
| 50 | 2 | 126 | 214.5 | 157 | 31 | 48 | PP00 | 235.5 | 230 | 41 | 56 | 65 | PP10S | 66 | 30 | 9 | 15 | 1/4 |

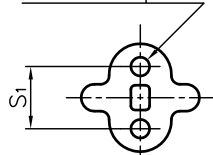
NOTE. 1. Operating pressure : 0.4-0.6MPa G
 Double Acting : Valve open : Port (a) Exhaust Port (b) Supply
 Valve shut : Port (a) Supply Port (b) Exhaust
 Air To Open : Valve open : Port (b) Supply
 Valve shut : Port (b) Exhaust
 2. The shape and appearance of assembly differ a little with nominal size and material compared to this drawing.

| NO. | DESCRIPTION | QTY. | MATERIAL | REMARKS |
|-----|------------------------|--------|--|--|
| 4a | RING | 2 | STAINLESS STEEL (SUS304) | Used for C-PVC Body, Threaded End: 15-25mm |
| 101 | POSITION INDICATOR (A) | 1 | polyacetal polyamide | PPW, PP00S, PP10S |
| 28 | SCREW (B) | 2 | STAINLESS STEEL (SUS304) | |
| 27 | BOLT · NUT (B) | 4-sets | STAINLESS STEEL (SUS304) | |
| 26 | BOLT (A) | 4 | STAINLESS STEEL (SUS304) | |
| 25 | JOINT | 1 | COPPER ALLOY (C3604) | |
| 24 | STAND | 1 | PPG | |
| 23 | ACTUATOR | 1 | PA etc. | |
| 13 | STOP RING | 2 | PVDF | Used for Flanged End. |
| 12 | O-RING (E) | 1 | | |
| 11 | O-RING (D) | 1 | <input type="checkbox"/> EPDM <input type="checkbox"/> FKM <input type="checkbox"/> Others | |
| 10 | O-RING (C) | 2 | | |
| 9 | O-RING (B) | 1 | | |
| 8 | O-RING (A) | 2 | | |
| 7 | SEAT | 2 | PTFE | |
| 6 | STEM | 1 | | |
| 5 | UNION NUT | 2 | <input type="checkbox"/> PVC <input type="checkbox"/> C-PVC | |
| 4 | END CONNECTOR | 2 | <input type="checkbox"/> PP <input type="checkbox"/> PVDF | |
| 3 | CARRIER | 1 | | |
| 2 | BALL | 1 | | |
| 1 | BODY | 1 | | |

FLANGED END

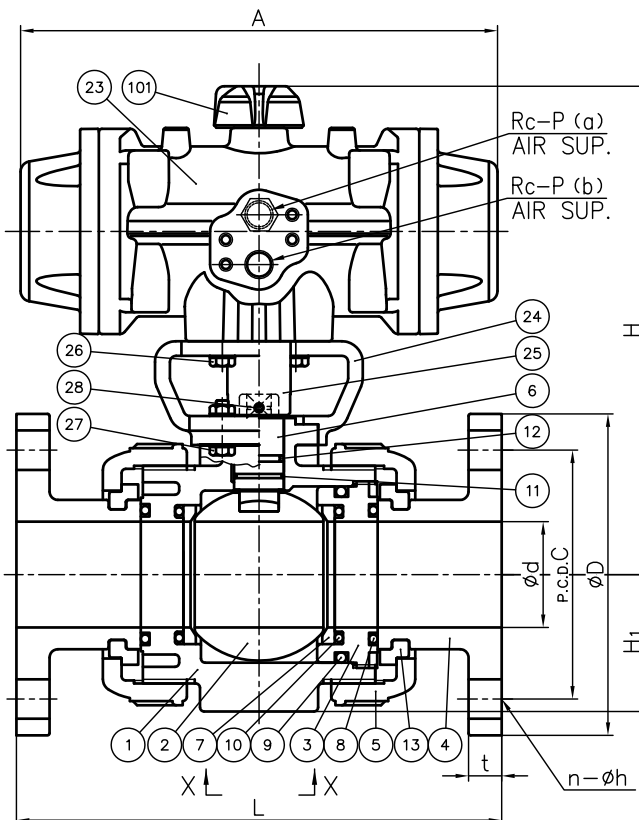


2-∅S₂ Depth S₃

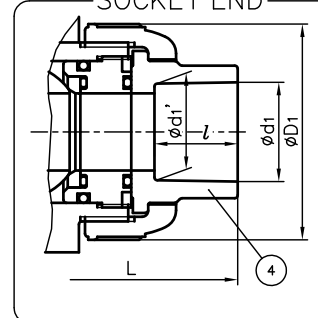


X-X

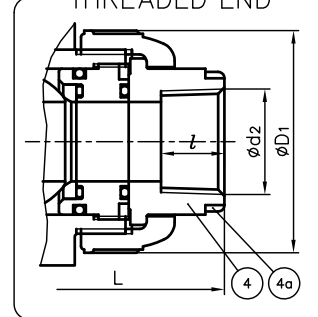
(Detail of Holes for Metallic Insert.)



SOCKET END



THREADED END



| | | | |
|-------------------|--|-------------|-------|
| ITEM | BALL VALVE (TYPE21·21ALPHA) PNEUMATIC MODEL AA TYPE ASS'Y □DOUBLE ACTING, □AIR TO OPEN ANSI : □FLANGED END, □SOCKET END, □THREADED END 15mm (1/2") ~ 50mm (2") | | |
| DRAWN | M.Iwakiri | DATE | SCALE |
| CHECKED | H.Kawano | JUN.18.2019 | ~ |
| APPROVED | K.Koushou | DRAWING No. | |
| | | IB-AA217AEm | |
| SPECIAL ORDER No. | ASAHI YUKIZAI CORPORATION | | |