

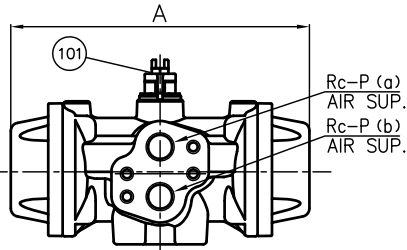
DIMENSIONS TABLE

Nominal Size	FLANGED END										SOCKET END						THREADED END				SPIGOT END						
	DIN PN10					L					PVC, C-PVC			PP, PVDF			L		PVC		PP, PVDF		t1				
	d	D	C	n	h	PVC C-PVC	PP PVDF	t	d1	l	L	d1	d1'	l	L	d2	l	PVC C-PVC	PP PVDF	d3	d3'	l	d3	l	PP	PVDF	L
15mm 1/2"	15	95	65	4	14	130	130	12	20	16	102	19.5	19.3	14.5	99	Rp 1/2	15	102	100	20	15	18.5	20	18.5	2.5	1.9	124
20 3/4	20	105	75	4	14	150	150	14	25	19	119	24.5	24.3	16	113	Rp 3/4	17	120	119	25	20	24	25	22	2.7	1.9	144
25 1	25	115	85	4	14	160	160	14	32	22	131	31.5	31.3	18	123	Rp 1	20	131	130	32	25	24.5	32	22.5	3.0	2.4	154
32 1 1/4	32	140	100	4	18	180	180	16	40	26	150	39.45	39.2	20.5	139	Rp 1 1/4	22	150	146	40	31	28	40	26	3.7	2.4	174
40 1 1/2	40	150	110	4	18	200	200	16	50	31	164	49.45	49.2	23.5	149	Rp 1 1/2	25	163	160	50	40	34	50	32	4.6	3.0	194
50 2	51	165	125	4	18	230	230	16	63	38	197	62.5	62.1	27.5	176	Rp 2	28	197	194	63	51	38	63	36	5.8	3.0	224

MODEL CLASSIFICATION TABLE

TYPE	MATERIAL
21ALPHA	PVC C-PVC
21	PP PVDF

Appearance of PPW

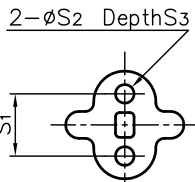
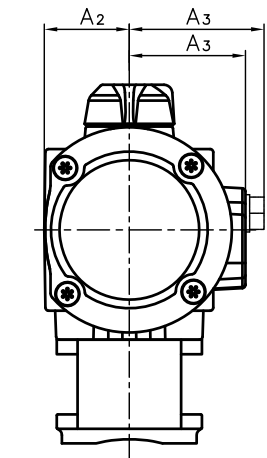


Unit: mm

Nominal Size	Double Acting							Air to Open							H1	S1	S2	S3	P
	D1	H	A	A2	A3	ACTUATOR TYPE	H	A	A2	A3	ACTUATOR TYPE								
15mm 1/2"	48	159	144	28	42	PPW	172	157	31	48	57	PP00S	29	19	7.3	11	1/4		
20 3/4	60	165.5	144	28	42	PPW	178.5	157	31	48	57	PP00S	35	19	7.3	11	1/4		
25 1	70	172.5	144	28	42	PPW	185.5	157	31	48	57	PP00S	39	19	7.3	11	1/4		
32 1 1/4	82	181.5	144	28	42	PPW	194.5	157	31	48	57	PP00S	47	30	9	15	1/4		
40 1 1/2	100	203	157	31	48	PP00	224	230	41	56	65	PP10S	55	30	9	15	1/4		
50 2	126	214.5	157	31	48	PP00	235.5	230	41	56	65	PP10S	66	30	9	15	1/4		

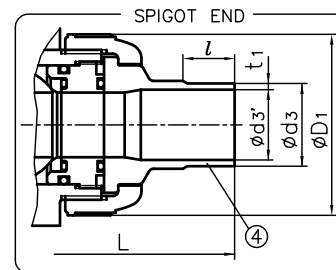
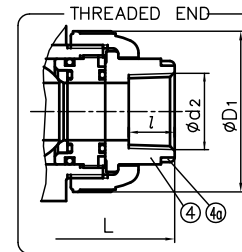
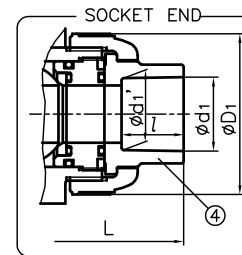
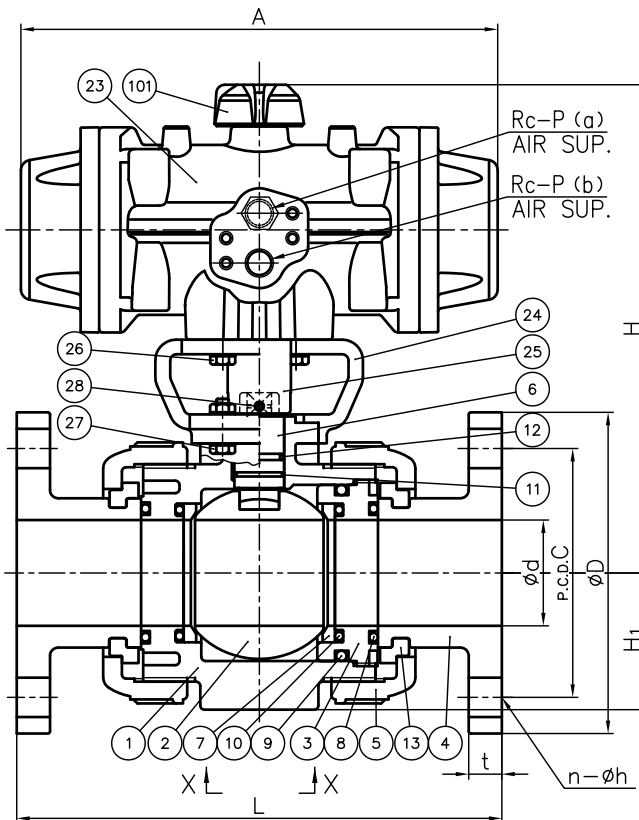
- NOTE. 1. Operating pressure: 0.4-0.6MPa G
 Double Acting: Valve open: Port (a) Exhaust Port (b) Supply
 Valve shut: Port (a) Supply Port (b) Exhaust
 Air To Open: Valve open: Port (b) Supply
 Valve shut: Port (b) Exhaust
 2. The shape and appearance of assembly differ a little with nominal size and material compared to this drawing.

FLANGED END



X-X

(Detail of Holes for Metallic Insert.)



NO.	DESCRIPTION	QTY.	MATERIAL	REMARKS
4a	RING	2	STAINLESS STEEL (SUS304)	Used for C-PVC Body, Threaded End: 15-25mm
101	POSITION INDICATOR (A)	1	polyacetal polyamide	PPW, PP00S, PP10S
28	SCREW (B)	2	STAINLESS STEEL (SUS304)	
27	BOLT · NUT (B)	4-sets	STAINLESS STEEL (SUS304)	
26	BOLT (A)	4	STAINLESS STEEL (SUS304)	
25	JOINT	1	COPPER ALLOY (C3604)	
24	STAND	1	PPG	
23	ACTUATOR	1	PA etc.	
13	STOP RING	2	PVDF	Used for Flanged End.
12	O-RING (E)	1		
11	O-RING (D)	1	□ EPDM □ FKM □ Others	
10	O-RING (C)	2		
9	O-RING (B)	1	()	
8	O-RING (A)	2		
7	SEAT	2	PTFE	
6	STEM	1		
5	UNION NUT	2	□ PVC □ C-PVC □ PP □ PVDF	
4	END CONNECTOR	2		
3	CARRIER	1		
2	BALL	1		
1	BODY	1		

ITEM BALL VALVE (TYPE21·21ALPHA) PNEUMATIC MODEL AA TYPE ASS'Y
 □DOUBLE ACTING, □AIR TO OPEN
 DIN: □FLANGED END, □SPIGOT END
 □SOCKET END, □THREADED END
 15mm (1/2") ~ 50mm (2")

DRAWN	E.Ozaki	DATE	SCALE
CHECKED	H.Kawano	MAR.13.2018	
APPROVED	H.Kouroggi	DRAWING No.	
SPECIAL ORDER No.		IB-AA217DE	

ASAHI YUKIZAI CORPORATION