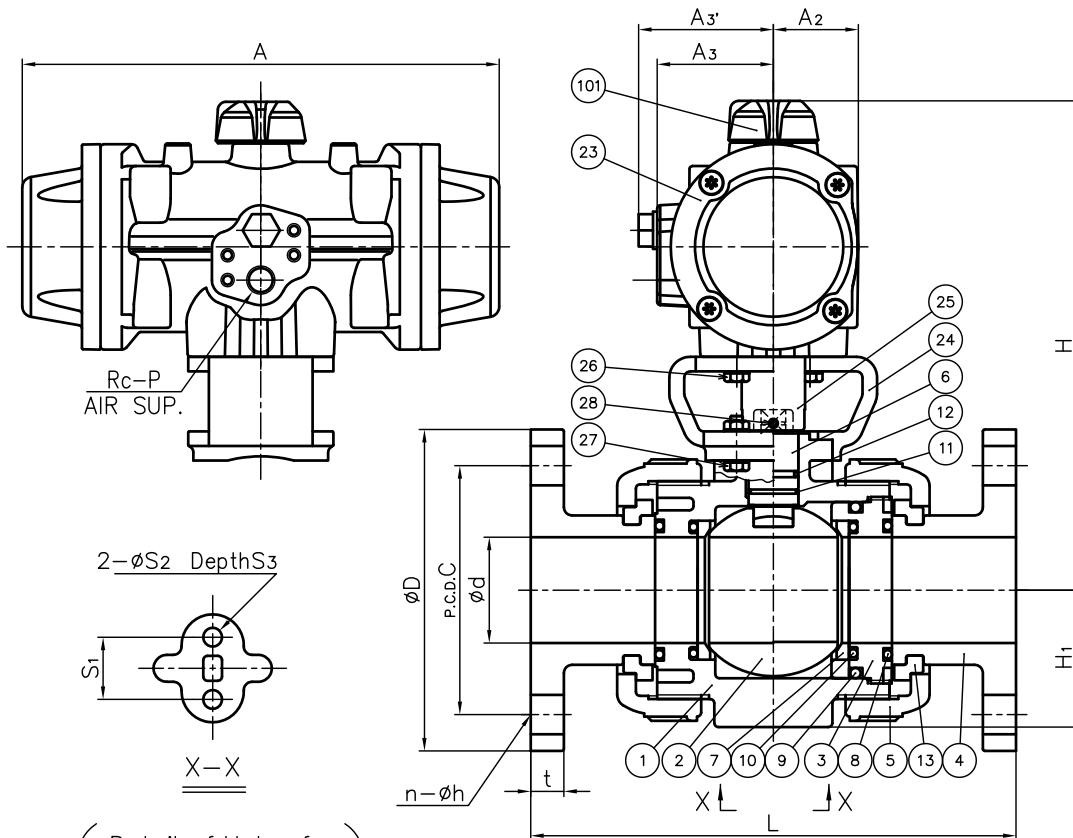


DIMENSIONS TABLE

Unit : mm

Nominal Size	d	FLANGED END						SOCKET END						THREADED END														ACTUATOR TYPE	
		ANSI Class 150						PVC, C-PVC			PP, PVDF			d ₂	l	L													
		D	C	n	h	L	t	ASTM SCH80			L	d ₁	l			L	PVC C-PVC	PP PVDF											
								d ₁	d ₁ '	l																			
15mm ½"	15	89	60.5	4	16	143	12	21.54	22.22	113	20.96	22.2	112	½-14NPT	15	102	100	48	172	157	31	48	57	29	19	7.3	11	1/4	PP00S
20 ¾"	20	98	70	4	16	172	14	26.87	26.57	129	26.16	25.4	127	¾-14NPT	17	120	119	60	178.5	157	31	48	57	35	19	7.3	11	1/4	PP00S
25 1"	25	108	79.5	4	16	187	14	33.65	33.27	145	33.02	28.6	143	1-11½NPT	20	131	130	70	185.5	157	31	48	57	39	19	7.3	11	1/4	PP00S
32 1½"	32	117	89	4	16	190	16	42.42	42.04	164	41.91	31.8	160	1½-11½NPT	22	150	146	82	194.5	157	31	48	57	47	30	9	15	1/4	PP00S
40 2"	40	127	98.5	4	16	212	16	45.56	48.11	184	48.01	34.9	179	2-11½NPT	25	163	160	100	224	230	41	56	65	55	30	9	15	1/4	PP10S
50 2½"	51	152	120.5	4	19	234	16	60.63	60.17	209	59.94	38.1	204	2-11½NPT	28	197	194	126	235.5	230	41	56	65	66	30	9	15	1/4	PP10S

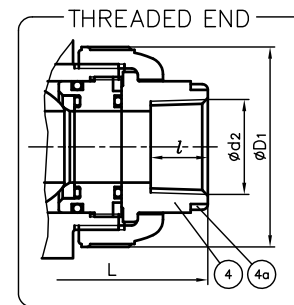
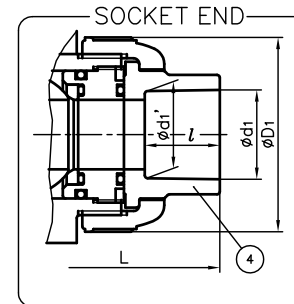
FLANGED END



(Detail of Holes for Metallic Insert.)

MODEL CLASSIFICATION TABLE

TYPE	MATERIAL
21ALPHA	PVC C-PVC
21	PP PVDF



NOTE.

- Operating pressure : 0.4-0.6MPa G
Air to shut ; Air-less open
- The shape and appearance of assembly differ a little with nominal size and material compared to this drawing.

NO.	DESCRIPTION	QTY.	MATERIAL	REMARKS
4a	RING	2	STAINLESS STEEL (SUS304)	Used for C-PVC Body, Threaded End: 15-25mm
101	POSITION INDICATOR (A)	1	polyamide	PP00S, PP10S
28	SCREW (B)	2	STAINLESS STEEL (SUS304)	
27	BOLT · NUT (B)	4-sets	STAINLESS STEEL (SUS304)	
26	BOLT (A)	4	STAINLESS STEEL (SUS304)	
25	JOINT	1	COPPER ALLOY (C3604)	
24	STAND	1	PPG	
23	ACTUATOR	1	PA etc.	
13	STOP RING	2	PVDF	Used for Flanged End.
12	O-RING (E)	1		
11	O-RING (D)	1	□ EPDM □ FKM □ Others	
10	O-RING (C)	2		
9	O-RING (B)	1		
8	O-RING (A)	2		
7	SEAT	2	PTFE	
6	STEM	1		
5	UNION NUT	2		
4	END CONNECTOR	2	□ PVC □ C-PVC □ PP □ PVDF	
3	CARRIER	1		
2	BALL	1		
1	BODY	1		

ITEM	BALL VALVE (TYPE21 · 21ALPHA) PNEUMATIC MODEL AA TYPE ASSY AIR TO SHUT ANSI : □FLANGED END, □SOCKET END, □THREADED END 15mm (½") ~ 50mm (2")		
DRAWN	M.Iwakiri	DATE	SCALE
CHECKED	H.Kawano	JUN.18.2019	~
APPROVED	K.Koushou	DRAWING No.	
SPECIAL ORDER No.	IB-AA218AEm		
ASAHI YUKIZAI CORPORATION			