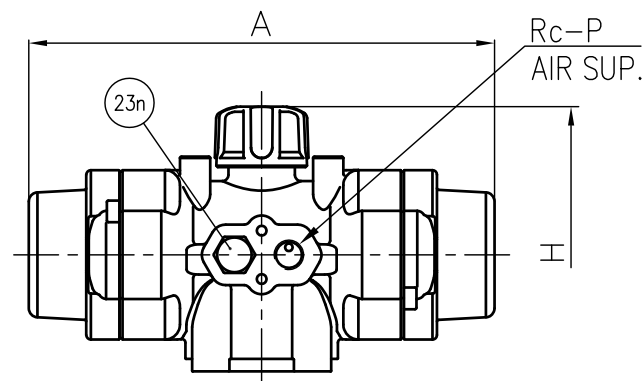


Actuator Shape (AR040)



DIMENSIONS TABLE

Nominal Size	FLANGE END								SOCKET END						THREADED END				
	ANSI Class 150								PVC, C-PVC			PP, PVDF			L				
	ASTM SCH80																		
	d	D	C	n	h	L	t	d1	d1'	l	L	d1	l	L	d2	l	PVC C-PVC	PP PVDF	
15mm	1/2"	15	89	60.5	4	16	143	12	21.54	21.23	22.22	113	20.96	22.2	112	1/2 - 14 NPT	15	102	100
20	3/4	20	98	70	4	16	172	14	26.87	26.57	25.40	129	26.16	25.4	127	3/4 - 14 NPT	17	120	119
25	1	25	108	79.5	4	16	187	14	33.65	33.27	28.58	145	33.02	28.6	143	1 - 11 1/2 NPT	20	131	130
32	1 1/4	32	117	89	4	16	190	16	42.42	42.04	31.75	164	41.91	31.8	160	1 1/4 - 11 1/2 NPT	22	150	146
40	1 1/2	40	127	98.5	4	16	212	16	48.56	48.11	34.93	184	48.01	34.9	179	1 1/2 - 11 1/2 NPT	25	163	160
50	2	51	152	120.5	4	19	234	16	60.63	60.17	38.10	209	59.94	38.1	204	2 - 11 1/2 NPT	28	197	194

MODEL CLASSIFICATION TABLE

TYPE	MATERIAL
21 ALPHA	PVC C-PVC
21	PP PVDF

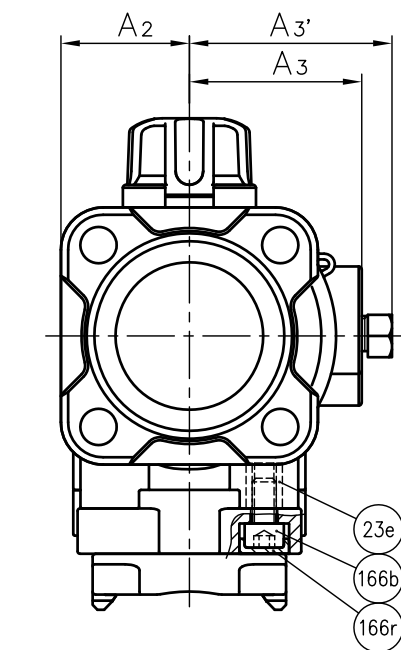
Unit: mm

Nominal Size	D1	H	H1	A	A2	A3	A3'	S1	S2	S3	P	ACTUATOR TYPE		
												Air to open	Air to shut	
15mm	1/2"	48	131	29	154	28	38	46	19	7.3	11	1/8	AR040NC20CN	AR040NO20CN
20	3/4	60	137.5	35	154	28	38	46	19	7.3	11	1/8	AR040NC20CN	AR040NO20CN
25	1	70	144.5	39	154	28	38	46	19	7.3	11	1/8	AR040NC20CN	AR040NO20CN
32	1 1/4	82	178	47	194	35	49	59	30	9	15	1/4	AR050NC30CN	AR050NO30CN
40	1 1/2	100	208.5	55	254	42.5	57	67	30	9	15	1/4	AR063NC40CN	AR063NO40CN
50	2	126	220	66	254	42.5	57	67	30	9	15	1/4	AR063NC40CN	AR063NO40CN

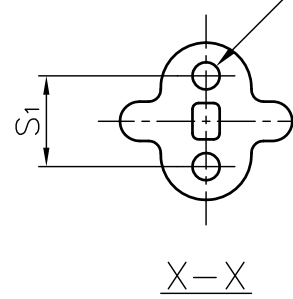
NOTE.

- Operation of permission pressure: 0.4~0.7MPa G
 Air to open: Valve open : Supply
 Valve shut : Exhaust
 Air to shut: Valve open : Exhaust
 Valve shut : Supply
- The shape and appearance of assembly differ a little with nominal size compared to this drawing.

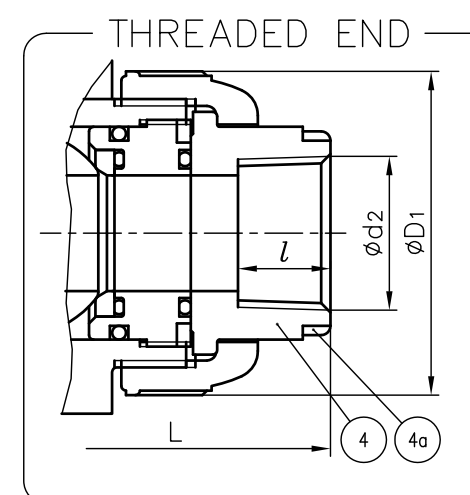
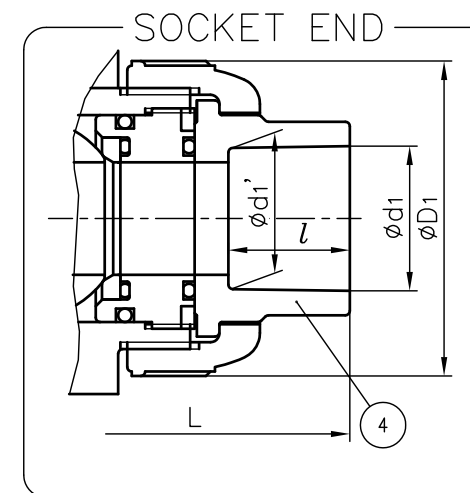
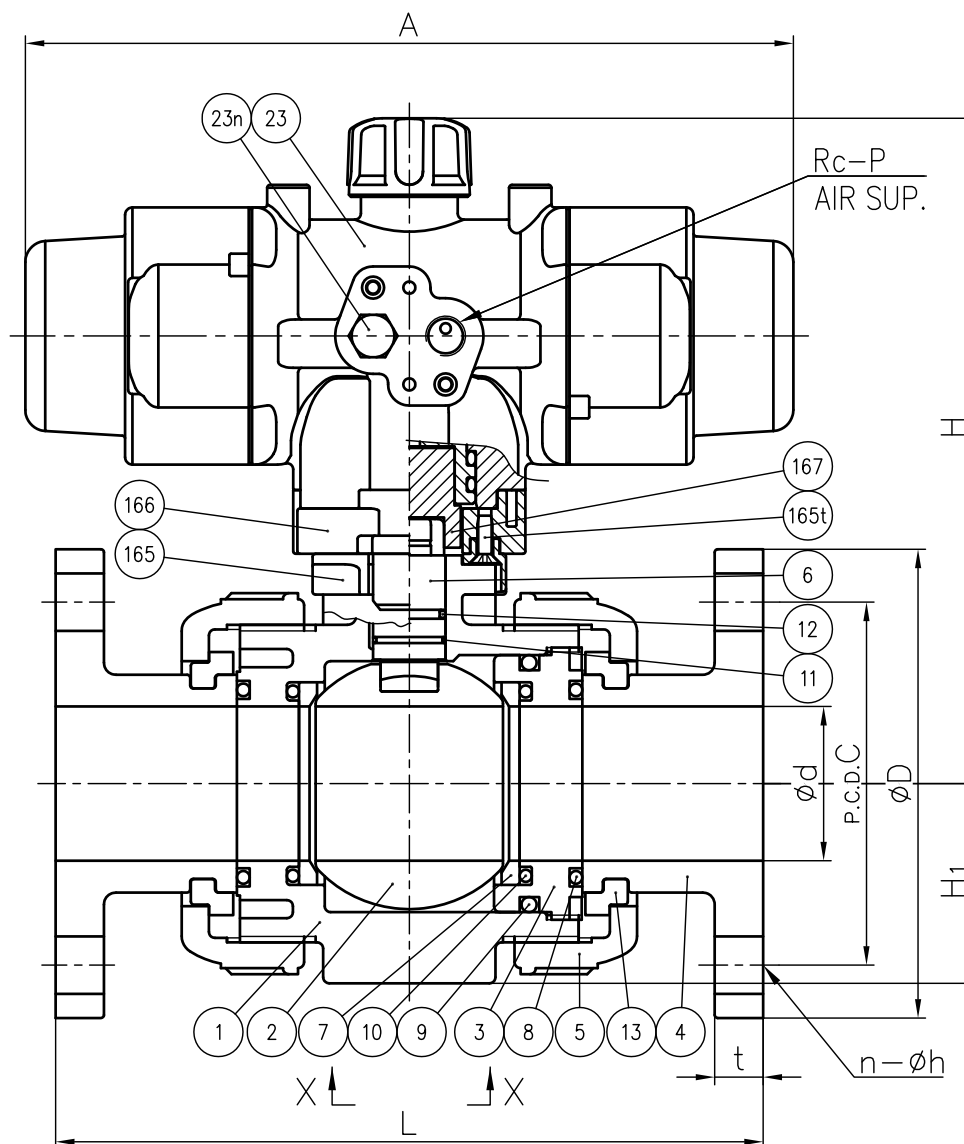
FLANGE END



2- ϕ S2 Depth S3



(Detail of Holes for Metallic Insert)



4a	RING	2	STAINLESS STEEL (SUS304)	Used for C-PVC Body, Threaded End: 1/2"~1"
167	SHAFT ADAPTER	1	COPPER ALLOY (C3604)	
166r	CAP (No.166)	4	EPDM	
166b	BOLT (No.166)	4	STAINLESS STEEL (SUS304)	
166	CONNECTOR PLATE	1	PPG	
165t	TAPPING SCREW (No.165)	2	STAINLESS STEEL (SUS304)	
165	BASE PLATE	1	PPG	
23n	NIPPLE	1	PPG	
23e	ENSAT (No.23)	4	COPPER ALLOY (C3604)	
23	ACTUATOR	1	PPG etc.	
13	STOP RING	2	PVDF	Used for Flanged End
12	O-RING (E)	1	EPDM FKM Others	
11	O-RING (D)	1		
10	O-RING (C)	2		
9	O-RING (B)	1		
8	O-RING (A)	2		
7	SEAT	2	PTFE	
6	STEM	1		
5	UNION NUT	2	PVC C-PVC	
4	END CONNECTOR	2	PP PVDF	
3	CARRIER	1		
2	BALL	1		
1	BODY	1		
No.	DESCRIPTION	QTY.	MATERIAL	REMARKS
ITEM	BALL VALVE (TYPE21-21ALPHA) PNEUMATIC ACTUATED MODEL TYPE AR ASSY <input type="checkbox"/> AIR TO OPEN, <input type="checkbox"/> AIR TO SHUT ANSI: <input type="checkbox"/> FLANGED END, <input type="checkbox"/> SOCKET END, <input type="checkbox"/> THREADED END 15mm (1/2") ~ 50mm (2")			
DRAWN	A.Kano	DATE	SCALE	
CHECKED	H.Iguchi	OCT.27.2017	DRAWING No.	
APPROVED	H.korogi	IB-AA260AEm		
SPECIAL ORDER No.	ASAHI YUKIZAI CORPORATION			