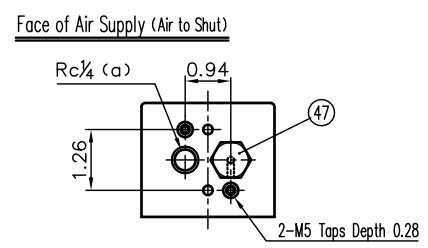
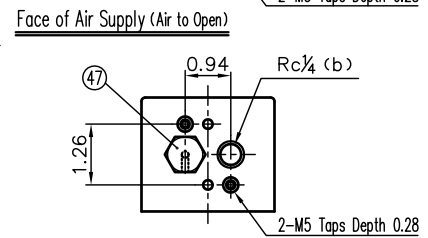
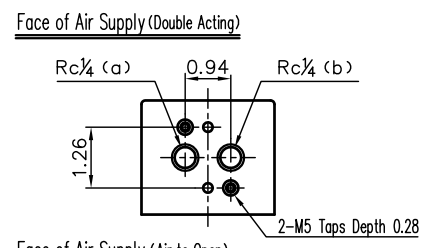
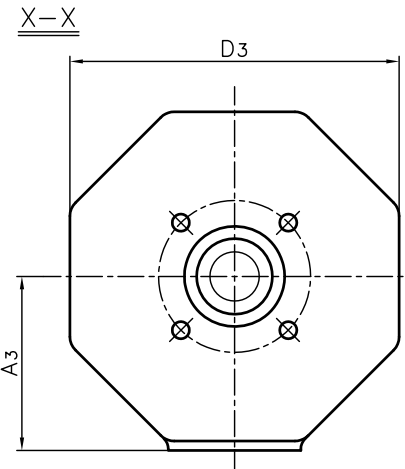
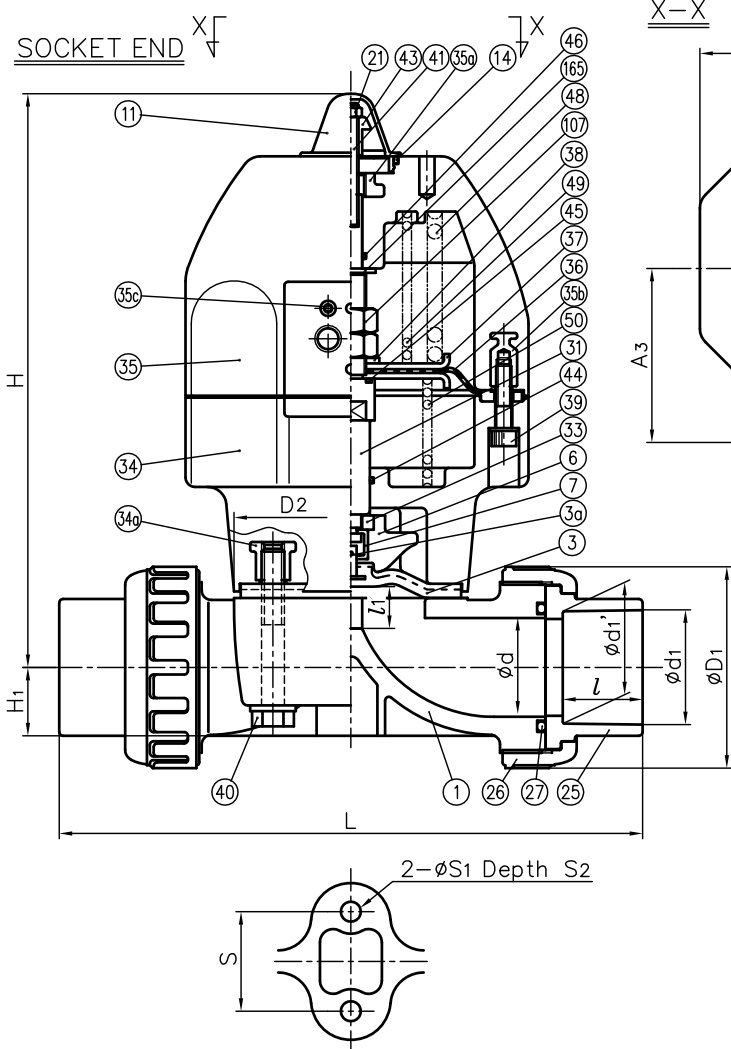


DIMENSIONS TABLE

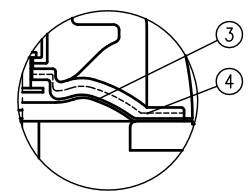
UNIT: inch

NOMINAL SIZE	d	SOCKET END							THREADED END														
		PVC, C-PVC				PP, PVDF (IPS)			d2	l	L		D1	D2	D3	l1 (UFT)	H	H1	A3	S	S1	S2	
		ASTM SCH80		l	L	d1	l	L			C-PVC	PP											
1/2"	15mm	0.63	0.848						0.836	0.875			5.47	0.83	0.87	5.43	1/2 - 14 NPT	0.59	5.04	5.04	1.89	2.13 x 2.60	5.12
3/4"	20	0.79	1.058	1.046	1.000	6.18	1.03	1.00	6.09	3/4 - 14 NPT	0.67	5.83	5.83	2.36	2.13 x 2.60	5.12	0.39	7.40	0.69	2.68	0.98	0.28	0.51
1"	25	0.98	1.325	1.310	1.125	7.32	1.30	1.13	7.24	1 - 11 1/2 NPT	0.79	6.77	6.77	2.76	2.64 x 3.15	5.12	0.47	7.60	0.73	2.68	0.98	0.28	0.51
1 1/4"	32	1.26	1.670	1.655	1.250	7.95	1.65	1.25	7.80	1 1/4 - 11 1/2 NPT	0.87	7.40	7.40	3.23	2.64 x 3.15	5.12	0.47	7.76	0.89	2.68	0.98	0.28	0.51
1 1/2"	40	1.57	1.912	1.894	1.375	10.47	1.89	1.37	10.28	1 1/2 - 11 1/2 NPT	0.98	9.65	9.65	3.94	4.25 x 4.25	6.85	0.83	11.54	1.08	3.62	1.77	0.35	0.59
2"	50	2.05	2.387	2.369	1.500	11.54	2.36	1.50	11.54	2 - 11 1/2 NPT	1.10	11.06	10.95	4.17	4.84 x 4.84	6.85	0.98	11.89	1.42	3.62	1.77	0.35	0.59

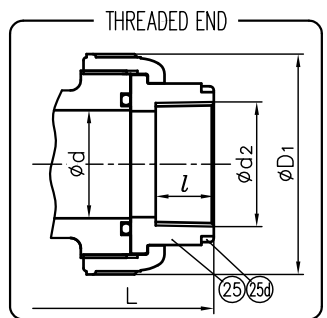
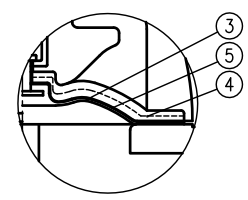
NOTE.  
 1. Operation of permission pressure: 0.4~0.6MPa G  
 Air to open : 1"~2" : 0.45~0.6MPa G (only fluid pressure is 0)  
 2. Double Acting : Valve open : Port (a) Exhaust Port (b) Supply  
 Valve shut : Port (a) Supply Port (b) Exhaust  
 Air To Open : Valve open : Port (b) Supply  
 Valve shut : Port (b) Exhaust  
 Air To Shut : Valve open : Port (a) Exhaust  
 Valve shut : Port (a) Supply  
 3. Diaphragms except EPDM and PTFE are available in FKM, VIFLON<sup>®</sup>C (FKM-C), VIFLON<sup>®</sup>F (FKM-F), CSM and NBR when required. The shape and appearance of assembly differ a little with nominal size compared to this drawing.



In Case Material of Diaphragm is PTFE



In Case Material of Diaphragm is PTFE with Cushion Cover



25d	RING	2	STAINLESS STEEL (SUS304)	Used for C-PVC Body, Threaded End 1/2~1"
165	WASHER	1	STAINLESS STEEL	SUS304
107	LOCK NUT	2	STAINLESS STEEL	SUS304
50	SPRING (C)	1	SPRING STEEL (SWO5M-B)	Used for Air to Shut
49	SPRING (B)	1	SPRING STEEL (SWO5M-B)	Used for Air to Open
48	SPRING (A)	1	SPRING STEEL (SWO5M-B)	Used for Air to Open
47	NIPPLE	1	COPPER ALLOY (C3604)	Used for Air to Shut and Air to Open
46	O-RING (F)	1	NBR	
45	O-RING (E)	1	NBR	
44	O-RING (D)	1	NBR	
43	STOPPER	1	STAINLESS STEEL	SUS304
41	INDICATING LOD	1	STAINLESS STEEL	SUS304
40	BOLT (B)	4	STAINLESS STEEL	SUS304
39	BOLT (A)	8	STAINLESS STEEL	SUS304
38	CONICAL SPRING WASHER (B)	1	STAINLESS STEEL	SUS304
37	CYLINDER DIAPHRAGM PLATE	2	STAINLESS STEEL	SUS304
36	CYLINDER DIAPHRAGM	1	NBR	
35c	SCREWED METAL OF CYLINDER BONNET (B)	2	STAINLESS STEEL	SUS303
35b	INSERTED METAL OF CYLINDER BONNET (B)	8	COPPER ALLOY	C3604
35a	INSERTED METAL OF CYLINDER BONNET (A)	1	STAINLESS STEEL	SUS304
35	CYLINDER BONNET	1	PPG	
34a	INSERTED METAL OF CYLINDER BODY	4	COPPER ALLOY	C3604
34	CYLINDER BODY	1	PPG	
33	COMPRESSOR PUSHING PLATE	1	COPPER ALLOY	C3604
31	STEM	1	COPPER ALLOY	C3604
27	O-RING (C)	2	EPDM Others ( )	
21	NUT	1	STAINLESS STEEL	SUS304
14	O-RING (A)	1	EPDM	
11	GAUGE COVER	1	PC	
7	JOINT	1	STAINLESS STEEL	SUS304
6	COMPRESSOR	1	PVDF	
5	CUSHION COVER	1	Nothing PVDF	Used for PTFE Diaphragm
4	CUSHION	1	EPDM	
3a	INSERTED METAL OF DIAPHRAGM	1	STAINLESS STEEL	SUS304
3	DIAPHRAGM	1	EPDM PTFE Others ( )	
26	UNION NUT	2	PVC	
25	END CONNECTOR	2	C-PVC PP PVDF	
1	BODY	1	PPVDF	

No.	DESCRIPTION	QTY.	MATERIAL	REMARKS
ITEM	T.U. DIAPHRAGM VALVE (TYPE14) PNEUMATIC ACTUATED MODEL TYPE AN ASSY <input type="checkbox"/> DOUBLE ACTING, <input type="checkbox"/> AIR TO OPEN, <input type="checkbox"/> AIR TO SHUT ANSI : <input type="checkbox"/> SOCKET END, <input type="checkbox"/> THREADED END 1/2" (15mm) ~ 2" (50mm)			
DRAWN	E.Emmei	DATE	SCALE	
CHECKED	H.Kawano	FEB.12.2019		
APPROVED	K.Koushou	DRAWING No.		
		T1-AA001AE		
SPECIAL ORDER No.	ASAHI YUKIZAI CORPORATION			