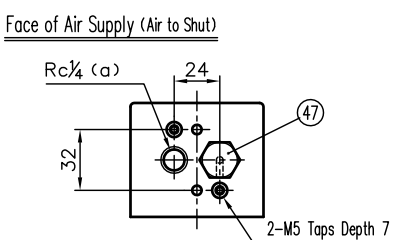
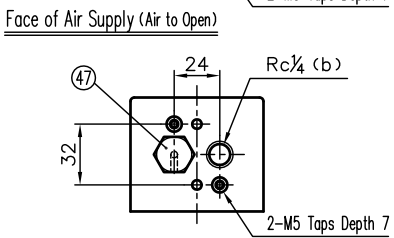
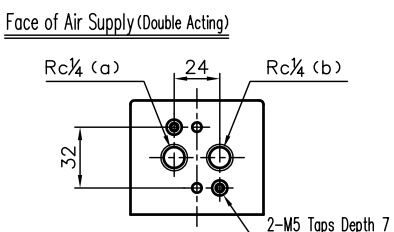
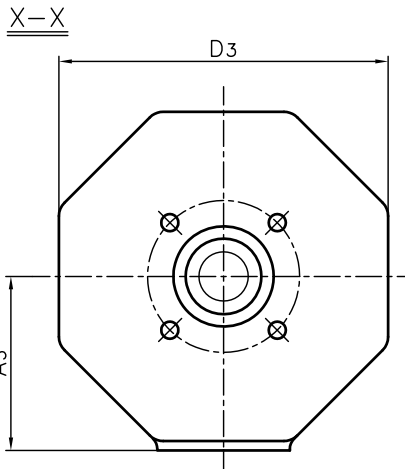
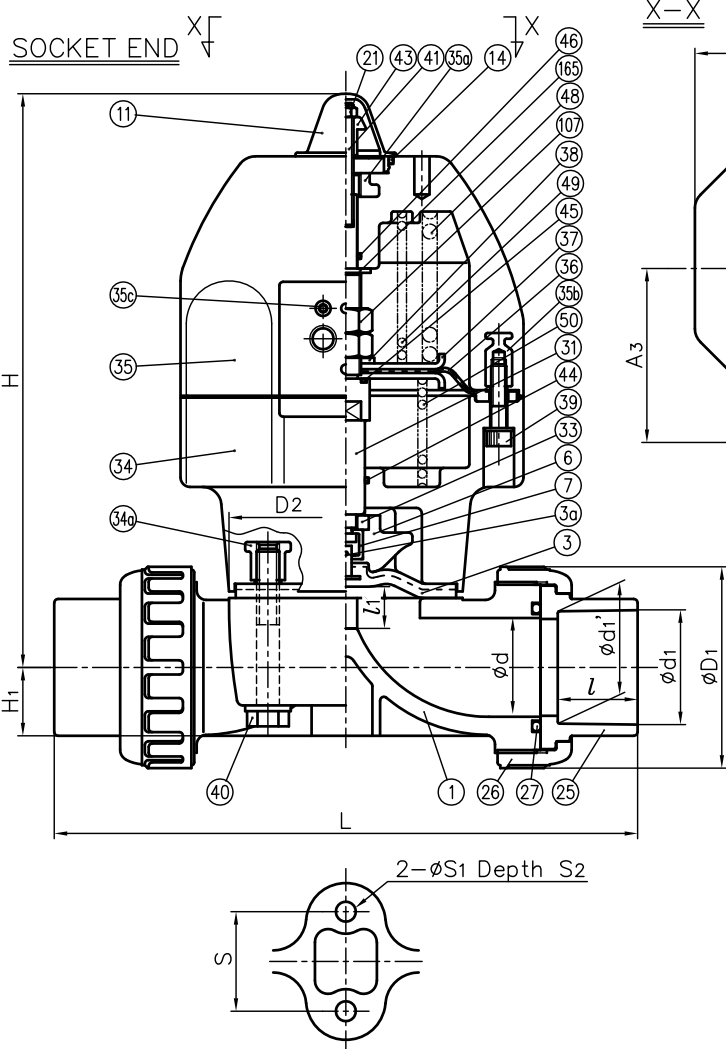


DIMENSIONS TABLE

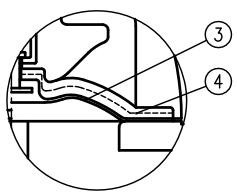
UNIT: mm

NOMINAL SIZE	d	SOCKET END								THREADED END													
		PVC,C-PVC				PP,PVDF (IPS)				d2	l	L		D1	D2	D3	l1 (LIFT)	H	H1	A3	S	S1	S2
		ASTM SCH80		l	L	d1	l	L	PVC			PP											
d1	d1'	C-PVC	PVDF																				
15mm	1/2"	16	21.54	21.23	22.23	139	21.08	22.2	138	1/2-14 NPT	15	128	128	48	54x66	100	10	186	19.5	68	25	7	13
20	3/4"	20	26.87	26.57	25.4	157	26.16	25.4	155	3/4-14 NPT	17	148	148	60	54x66	100	10	188	17.5	68	25	7	13
25	1	25	33.66	33.27	28.58	186	33.02	28.6	184	1-11/2 NPT	20	172	172	70	67x80	100	12	193	18.5	68	25	7	13
32	1 1/4	32	42.42	42.04	31.75	202	41.91	31.75	198	1 1/4-11/2 NPT	22	188	188	82	67x80	100	12	197	22.5	68	25	7	13
40	1 1/2	40	48.56	48.11	34.93	266	48.01	34.90	261	1 1/2-11/2 NPT	25	245	245	100	108x108	156	21	293	27.5	92	45	9	15
50	2	52	60.63	60.17	38.1	293	59.94	38.1	293	2-11/2 NPT	28	281	278	106	123x123	156	25	302	36	92	45	9	15

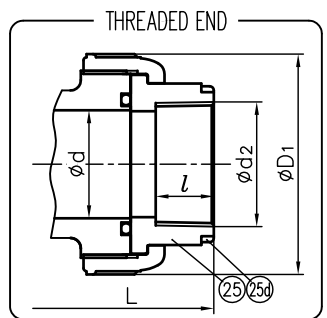
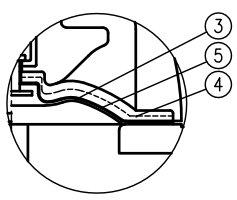
NOTE.
 1. Operation of permission pressure: 0.4~0.6MPa G
 Air to open : 25~50mm : 0.45~0.6MPa G (only fluid pressure is 0)
 2. Double Acting : Valve open : Port (a) Exhaust Port (b) Supply
 Valve shut : Port (a) Supply Port (b) Exhaust
 Air To Open : Valve open : Port (b) Supply
 Valve shut : Port (a) Exhaust
 Air To Shut : Valve open : Port (a) Exhaust
 Valve shut : Port (a) Supply
 3. Diaphragms except EPDM and PTFE are available in FKM, VIFLON[®]C (FKM-C), VIFLON[®]F (FKM-F), CSM and NBR when required. The shape and appearance of assembly differ a little with nominal size compared to this drawing.



In Case Material of Diaphragm is PTFE



In Case Material of Diaphragm is PTFE with Cushion Cover



25d	RING	2	STAINLESS STEEL (SUS304)	Used for C-PVC Body, Threaded End : 15~25mm
165	WASHER	1	STAINLESS STEEL	SUS304
107	LOCK NUT	2	STAINLESS STEEL	SUS304
50	SPRING (C)	1	SPRING STEEL (SWOSM-B)	Used for Air to Shut
49	SPRING (B)	1	SPRING STEEL (SWOSM-B)	Used for Air to Open
48	SPRING (A)	1	SPRING STEEL (SWOSM-B)	Used for Air to Open
47	NIPPLE	1	COPPER ALLOY (C3604)	Used for Air to Shut and Air to Open
46	O-RING (F)	1	NBR	
45	O-RING (E)	1	NBR	
44	O-RING (D)	1	NBR	
43	STOPPER	1	STAINLESS STEEL	SUS304
41	INDICATING LOD	1	STAINLESS STEEL	SUS304
40	BOLT (B)	4	STAINLESS STEEL	SUS304
39	BOLT (A)	8	STAINLESS STEEL	SUS304
38	CONICAL SPRING WASHER (B)	1	STAINLESS STEEL	SUS304
37	CYLINDER DIAPHRAGM PLATE	2	STAINLESS STEEL	SUS304
36	CYLINDER DIAPHRAGM	1	NBR	
35c	SCREWED METAL OF CYLINDER BONNET	2	STAINLESS STEEL	SUS303
35b	INSERTED METAL OF CYLINDER BONNET (B)	8	COPPER ALLOY	C3604
35a	INSERTED METAL OF CYLINDER BONNET (A)	1	STAINLESS STEEL	SUS304
35	CYLINDER BONNET	1	PPG	
34a	INSERTED METAL OF CYLINDER BODY	4	COPPER ALLOY	C3604
34	CYLINDER BODY	1	PPG	
33	COMPRESSOR PUSHING PLATE	1	COPPER ALLOY	C3604
31	STEM	1	COPPER ALLOY	C3604
27	O-RING (C)	2	□EPDM □Others ()	
21	NUT	1	STAINLESS STEEL	SUS304
14	O-RING (A)	1	EPDM	
11	GAUGE COVER	1	PC	
7	JOINT	1	STAINLESS STEEL	SUS304
6	COMPRESSOR	1	PVDF	
5	CUSHION COVER	1	□Nothing □PVDF	Used for PTFE Diaphragm
4	CUSHION	1	EPDM	
3a	INSERTED METAL OF DIAPHRAGM	1	STAINLESS STEEL	SUS304
3	DIAPHRAGM	1	□EPDM □PTFE □Others ()	
26	UNION NUT	2	□PVC	
25	END CONNECTOR	2	□C-PVC □PP □PVDF	
1	BODY	1	□PVC □PP □PVDF	

No.	DESCRIPTION	QTY.	MATERIAL	REMARKS
ITEM	T.U. DIAPHRAGM VALVE (TYPE14) PNEUMATIC ACTUATED MODEL TYPE AN ASSY □DOUBLE ACTING, □AIR TO OPEN, □AIR TO SHUT ANSI : □SOCKET END, □THREADED END 15mm (1/2") ~ 50mm (2")			
DRAWN	E.Ozaki	DATE	SCALE	
CHECKED	H.Kawano	MAY.15.2019		
APPROVED	K.Koushou	DRAWING No.		
		T1-AA001AEm		△
SPECIAL ORDER No.	ASAHI YUKIZAI CORPORATION			