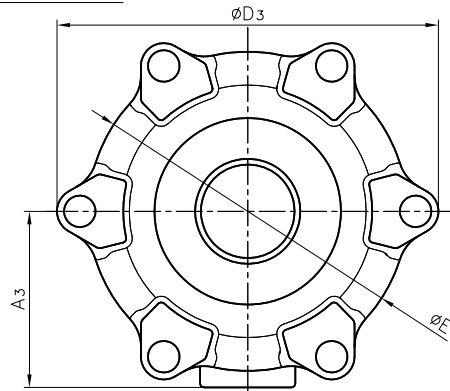


SOCKET END



DIMENSIONS TABLE

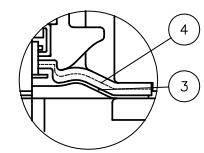
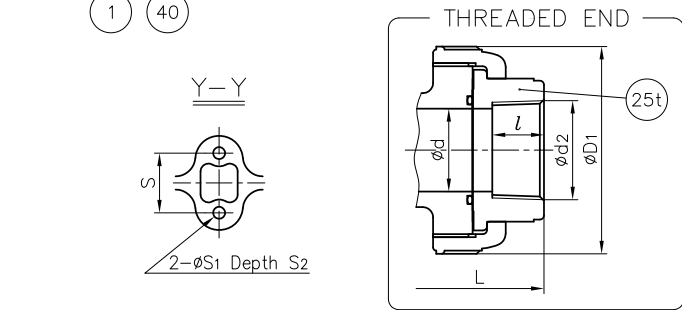
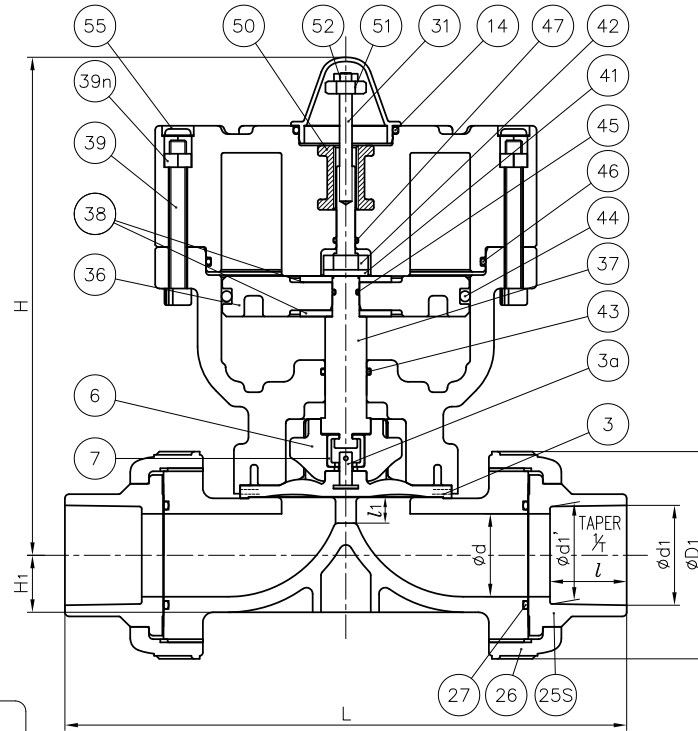
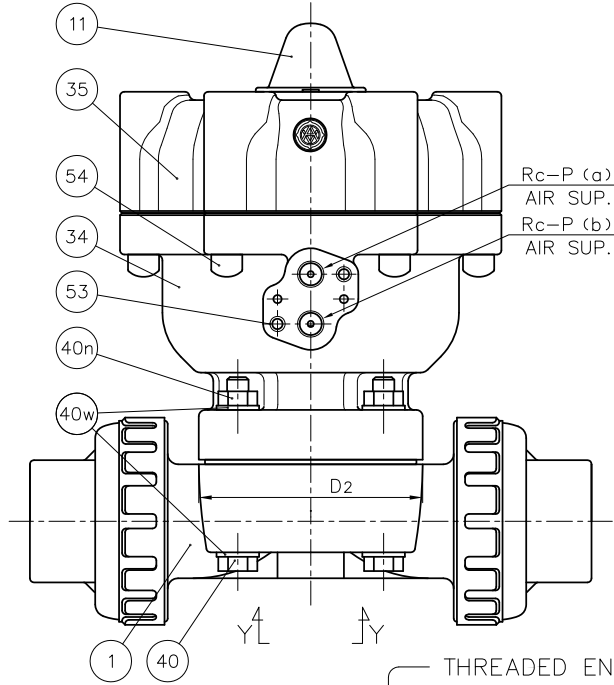
Nominal Size		SOCKET END								THREADED END				
		PVC, C-PVC				PP				$d_2$	$l$	L		
		$d$	$d_1$	$l$	$\frac{1}{4}$	$L$	$d_1$	$d_1'$	$l$			$L$	PVC C-PVC	PP PVDF
40mm 1½"	40	48.21	37	½ <sub>37</sub>	271	47.0	46.0	28	253	Rc 1½	25	245	245	
50	2	51	60.25	42	½ <sub>37</sub>	303	59.0	58.0	28	275	Rc 2	28	281	278

Unit : mm

Nominal Size		$D_1$	$D_2$	$D_3$	E	$l_1$ (LIFT)	H	$H_1$	$A_3$	S	$S_1$	$S_2$	P
40mm 1½"		100	108x108	184	154	18	238	27.5	85	45	9	15	¼
50	2	106	123x123	184	154	20	254	36	85	45	9	15	¼

NOTE.

- Operation of permission pressure : 0.4~0.6MPa G
- Double Acting: Valve open: Port (a) Exhaust  
Port (b) Supply  
Valve shut: Port (a) Supply  
Port (b) Exhaust
- The shape and appearance of assembly differ a little with nominal size compared to this drawing.



In case Material of Diaphragm is PTFE

55	CAP	6	EPDM	Blue
54	CAP FOR HEXAGON SOCKET HEAD CAP SCREWS	6	PVC	
53	INSERTED METAL OF CYLINDER BODY	2	STAINLESS STEEL (SUS304)	
52	NUT (No.52)	1	STAINLESS STEEL (SUS304)	
51	STOPPER FOR PNEUMATIC ACTUATOR	1	STAINLESS STEEL (SUS304)	
50	INSERTED METAL OF CYLINDER COVER	1	STAINLESS STEEL (SUS304)	
47	O-RING (No.47)	1	NBR	
46	O-RING (No.46)	1	NBR	
45	O-RING (No.45)	1	NBR	
44	O-RING (No.44)	1	NBR	
43	O-RING (No.43)	1	NBR	
42	NUT (No.42)	1	STAINLESS STEEL (SUS304)	
41	SPRING WASHER	1	STAINLESS STEEL (SUS304)	
40n	NUT (No.40)	4	STAINLESS STEEL (SUS304)	
40w	WASHER (No.40)	8	STAINLESS STEEL (SUS304)	
40	BOLT (No.40)	4	STAINLESS STEEL (SUS304)	
39n	NUT (No.39)	6	STAINLESS STEEL (SUS304)	
39	BOLT (No.39)	6	STAINLESS STEEL (SUS304)	
38	WASHER (No.38)	2	STAINLESS STEEL (SUS304)	
37	STEM FOR PNEUMATIC ACTUATOR	1	COPPER ALLOY (C3604)	
36	PISTON	1	PPG	
35	CYLINDER COVER	1	PPG	
34	CYLINDER BODY	1	PPG	
31	INDICATOR ROD	1	STAINLESS STEEL (SUS304)	
27	O-RING (No.27)	2	□EPDM □Others ( )	
14	O-RING (No.14)	1	EPDM	
11	GAUGE COVER	1	PC	
7	JOINT	1	STAINLESS STEEL (SUS304)	
6	COMPRESSOR	1	PVDF	
4	CUSHION	1	EPDM	Used for PTFE Diaphragm
3a	INSERTED METAL OF DIAPHRAGM	1	STAINLESS STEEL (SUS304)	
3	DIAPHRAGM	1	□EPDM □PTFE □Others ( )	
26	UNION NUT	2		
25t	END CONNECTOR (THREADED END)	2	□PVC □C-PVC	
25s	END CONNECTOR (SOCKET END)	2	□PP □PVDF	
1	BODY	1		
No.	DESCRIPTION	QTY.	MATERIAL	REMARKS

ITEM	T.U.DIAPHRAGM VALVE PNEUMATIC ACTUATED MODEL TYPE AI ASS'Y DOUBLE ACTING JIS : □SOCKET END, □THREADED END 40mm (1½") · 50mm (2")		
DRAWN	E.Emmei	DATE	SCALE
CHECKED	H.Kawano	DEC.19.2018	
APPROVED	K.Koushou	DRAWING No. T1-AA031JE	
SPECIAL ORDER No.	ASAHYUKIZAI CORPORATION		