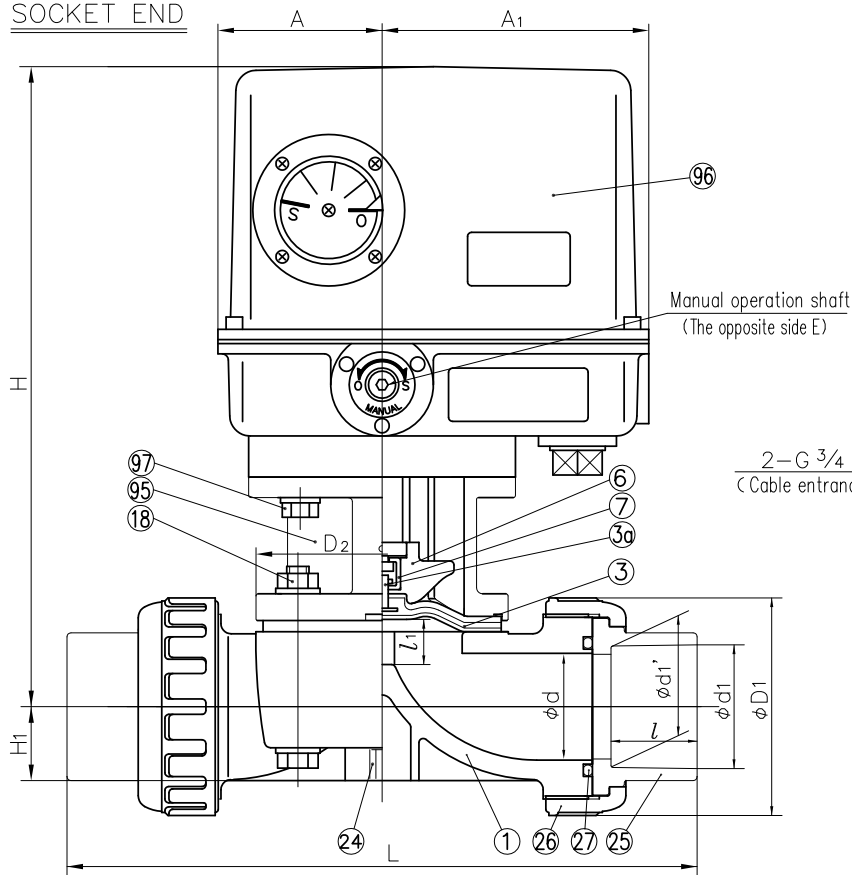


DIMENSIONS TABLE

UNIT : mm

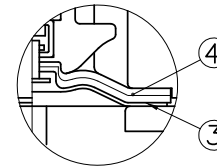
NOMINAL SIZE	SOCKET END																												THREADED END				SPIGOT END																		ACTUATOR MODEL
	SOCKET END												SPIGOT END																																						
	PVC,C-PVC				PP,PVDF								PVC		PP,PVDF																																				
	d	d1	l	L	d1	d1'	l	L	d2	l	PVC C-PVC	PP PVDF	d3	l	L	d3	l	PP	PVDF	L	D1	D2	l1 (LIFT)	H	H1	A	A1	A2	A3	E	S	S1	S2																		
15mm 1/2"	16	20	16	128	19.5	19.3	14.5	125	Rp 1/2	15	128	128	20	18.5	150	20	18.5	2.5	1.9	150	48	54 x 66	10	284	19.5	80	130	84	80	5	25	M5	10	ED-11H																	
20 3/4"	20	25	19	147	24.5	24.3	16	141	Rp 3/4	17	148	148	25	24	172	25	22	2.7	1.9	172	60	54 x 66	10	286	17.5	80	130	84	80	5	25	M5	10	ED-11H																	
25 1"	25	32	22	172	31.5	31.3	18	164	Rp 1	20	172	172	32	24.5	195	32	22.5	3.0	2.4	195	70	67 x 80	12	291	18.5	80	130	84	80	5	25	M5	10	ED-11H																	
32 1 1/4"	32	40	26	188	39.45	39.2	20.5	177	Rp 1 1/4	22	188	188	40	28	212	40	26	3.7	2.4	212	82	67 x 80	12	294.5	22.5	80	130	84	80	5	25	M5	10	ED-11H																	
40 1 1/2"	40	50	31	246	49.45	49.2	23.5	231	Rp 1 1/2	25	245	245	50	34	276	50	32	4.6	3.0	276	100	110 x 110	21	302.2	27.5	80	130	84	80	5	45	M6	14	ED-11H																	
50 2"	52	63	38	294	62.5	62.1	27.5	274	Rp 2	28	281	278	63	38.5	308	63	36	5.8	3.0	307	106	128 x 128	25	311.2	36.0	80	130	84	80	5	45	M6	14	ED-11H																	

SOCKET END

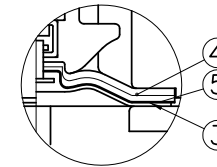


2-G 3/4
(Cable entrance)

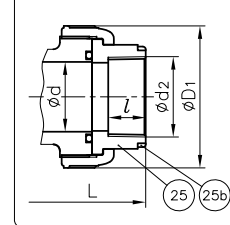
In case material of diaphragm is PTFE



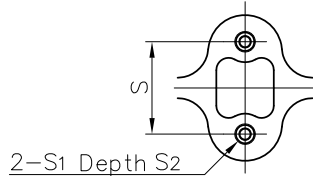
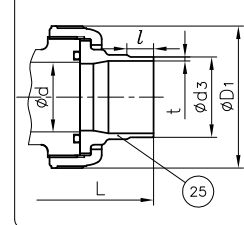
PTFE diaphragm with cushion cover



THREADED END



SPIGOT END



2-S1 Depth S2

- NOTE. 1. The shape and appearance of assembly differ a little with nominal size compared to this drawing.
2. Diaphragms except EPDM and PTFE are available in FKM, VIFLON[®]C (FKM-C), VIFLON[®]F (FKM-F), CSM and NBR when required.

25d	RING	2	STAINLESS STEEL (SUS304)	Used for C-PVC Body, Threaded End : 15~25mm
97	BOLT · WASHER(D)	4Sets		
96	ACTUATOR	1	CAST ALUMINUM ALLOY (AC2A etc)	meramin baking coat.
95	BONNET	1	CAST ALUMINUM ALLOY (AC2A etc)	epoxy coat
27	O-RING (C)	2	<input type="checkbox"/> EPDM <input type="checkbox"/> Others ()	
24	ENSAT FOR BODY	2	COPPER ALLOY (equal to C3603)	
18	BOLT · NUT (A)	4Sets	STAINLESS STEEL (SUS304)	
7	JOINT	1	STAINLESS STEEL (SUS304)	
6	COMPRESSOR	1	PVDF	
5	CUSHION COVER	1	<input type="checkbox"/> Nothing (standard) <input type="checkbox"/> PVDF	Used for PTFE Diaphragm
4	CUSHION	1	EPDM	
3a	INSERTED METAL OF DIAPHRAGM	1	STAINLESS STEEL (SUS304)	
3	DIAPHRAGM	1	<input type="checkbox"/> EPDM <input type="checkbox"/> PTFE <input type="checkbox"/> Others ()	
26	UNION NUT	2	<input type="checkbox"/> PVC <input type="checkbox"/> C-PVC <input type="checkbox"/> PP	
25	END CONNECTOR	1	<input type="checkbox"/> PVDF	
1	BODY	1		
No.	DESCRIPTION	QTY.	MATERIAL	REMARKS

ITEM	T.U. DIAPHRAGM VALVE (TYPE14) ELECTRIC MODEL TYPE H ASS'Y DIN: □SOCKET END, □THREADED END, □SPIGOT END 15mm (1/2") ~ 50mm (2")		
DRAWN	M.Iwakiri	DATE	SCALE
CHECKED	H.Kawano	AUG.15.2019	
APPROVED	K.Koushou	DRAWING No.	
		T1-AE001DE	
SPECIAL ORDER No.	ASAHI YUKIZAI CORPORATION		