

DIMENSIONS TABLE

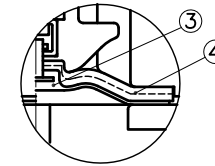
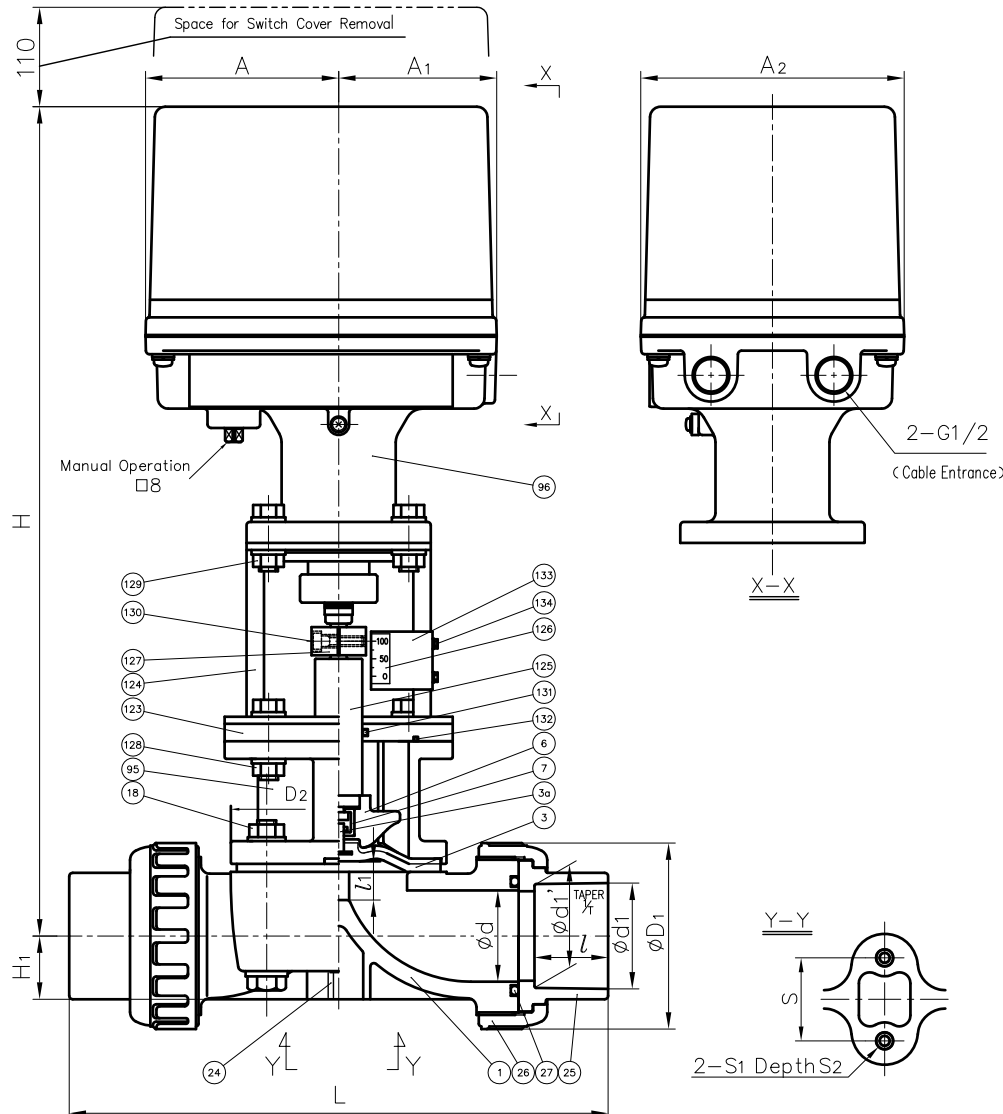
UNIT: mm

NOMINAL SIZE	SOCKET END												THREADED END												ACTUATOR MODEL
	U-PVC, C-PVC						PP						D1	D2	l1 (LIFT)	H	H1	A	A1	A2	S	S1	S2		
	d	d1	l	l'	L	L'	d1	d1'	l	L	L'	U-PVC C-PVC												PP PVDF	
15mm 1/2"	16	22.11	20	3/4	134	21.2	20.2	20	134	Rc 1/2	15	128	128	48	54 x 66	10	406	19.5	101	81	140	25	M5	10	PSN-1
20 3/4"	20	26.13	24	3/4	156	26.2	25.2	23	154	Rc 3/4	17	148	148	60	54 x 66	10	408	17.5	101	81	140	25	M5	10	PSN-1
25 1"	25	32.16	27	3/4	186	33.0	32.0	25	182	Rc 1	20	172	172	70	67 x 80	12	413	18.5	101	81	140	25	M5	10	PSN-1
32 1 1/4"	32	38.19	30	3/4	200	-	-	-	-	Rc 1 1/4	22	188	188	82	67 x 80	12	416	22.5	101	81	140	25	M5	10	PSN-1
40 1 1/2"	40	48.21	37	3/4	271	47.0	46.0	28	253	Rc 1 1/2	25	245	245	100	110 x 110	21	464	27.5	110	90	150	45	M6	14	PSN-3
50 2"	52	60.25	42	3/4	303	59.0	58.0	28	275	Rc 2	28	281	278	106	123 x 123	25	473	36	110	90	150	45	M6	14	PSN-3

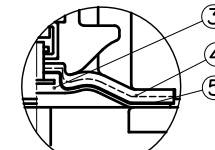
NOTE.

- Diaphragms except EPDM and PTFE are available in FKM, VIFLON® C (FKM-C), VIFLON® F (FKM-F), CSM and NBR when required.
- The shape and appearance of assembly differ a little with nominal size compared to this drawing.

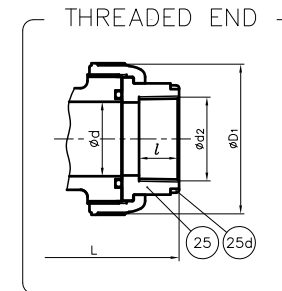
SOCKET END



In case material of diaphragm is PTFE



In case material of diaphragm is PTFE with cushion cover



25d	RING	2	STAINLESS STEEL (SUS304)	Used for C-PVC Body, Threaded End :15-22"
134	SCREW (F)	2	STAINLESS STEEL (SUS304)	
133	INDICATOR PLATE	1	STAINLESS STEEL (SUS304)	
132	O-RING (K)	1	NBR	
131	O-RING (J)	1	NBR	
130	BOLT (F)	2	STAINLESS STEEL (SUS304)	
129	BOLTO · NUT (F)	4Sets	STAINLESS STEEL (SUS304)	
128	BOLTO · NUT (E)	4Sets	STAINLESS STEEL (SUS304)	
127	JOINT	1	COPPER ALLOY (C3604)	
126	INDICATOR SEAL	1	ACRYL	
125	STEM (D)	1	COPPER ALLOY (C3604)	
124	STAND (A)	1	STAINLESS STEEL (SUS304)	
123	SPACER (A)	1	PVC	
96	ACTUATOR	1	ALUMINIUM etc.	Acryl Coat
95	BONNET	1	CAST ALUMINIUM ALLOY (AC4A)	Epoxy Coat
27	O-RING (C)	2	□EPDM □Others ()	
24	ENSAT FOR BODY	2	COPPER ALLOY (Equal to C3603)	
18	BOLT · NUT (A)	4Sets	STAINLESS STEEL (SUS304)	
7	JOINT	1	STAINLESS STEEL (SUS304)	
6	COMPRESSOR	1	PVDF	
5	CUSHION COVER	1	□Noting □PVDF	Used for PTFE Diaphragm
4	CUSHION	1	EPDM	
3a	INSERTED METAL OF DIAPHRAGM	1	STAINLESS STEEL (SUS304)	
3	DIAPHRAGM	1	□EPDM □PTFE □Others ()	
26	UNION NUT	2	□PVC □C-PVC □PP	
25	END CONNECTOR	1	□PPVDF	
1	BODY	1	□PPVDF	
No.	DESCRIPTION	QTY.	MATERIAL	REMARKS

ITEM	T.U. DIAPHRAGM VALVE (TYPE14) ELECTRIC MODEL TYPE M ASS'Y JIS : □SOCKET END, □THREADED END 15mm (1/2") ~ 50mm (2") with E-P POSITIONER		
DRAWN	M. Iwakiri	DATE	SCALE
CHECKED	H. Kawano	AUG. 15, 2019	~
APPROVED	K. Koushou	DRAWING No. T1-AE002JE	
SPECIAL ORDER No.	ASAHI YUKIZAI CORPORATION		