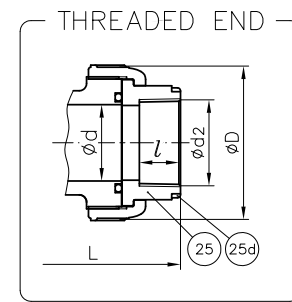
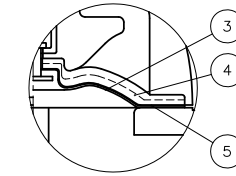
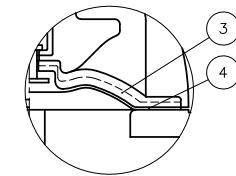
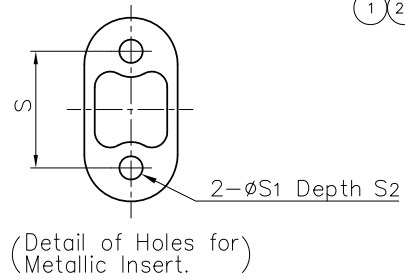
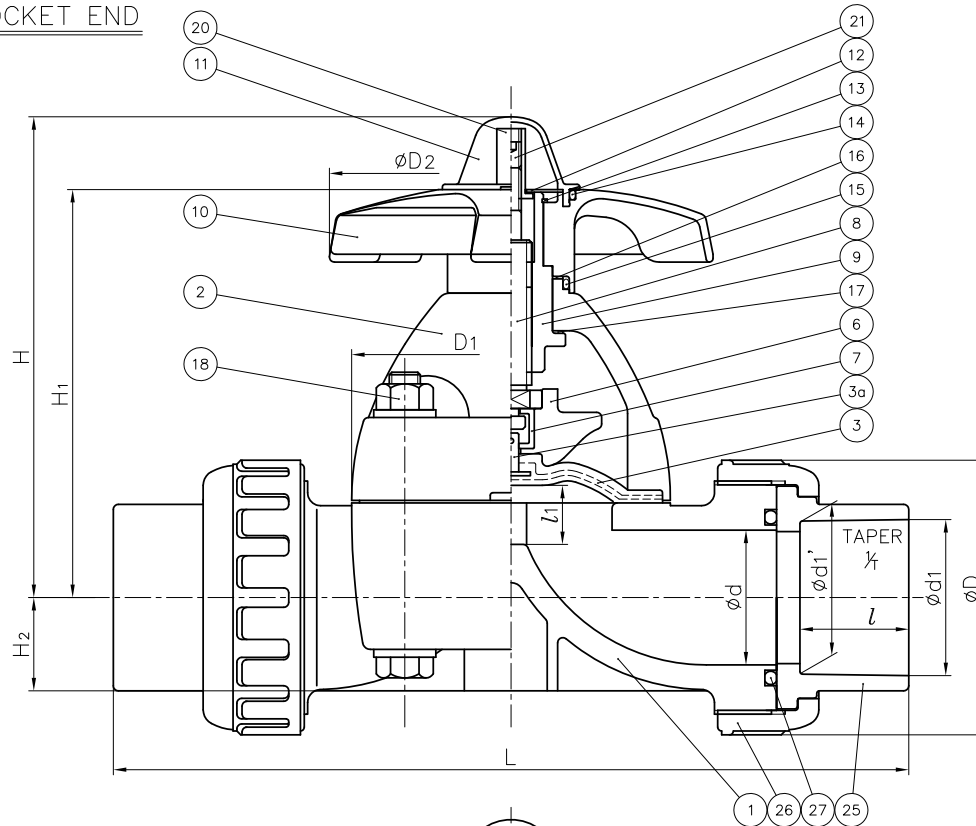


DIMENSIONS TABLE

UNIT : mm

NOMINAL SIZE	SOCKET END										THREADED END													
	PVC, C-PVC					PP					Rc		L		D	D1	D2	L1 (LIFT)	H	H1	H2	S	S1	S2
	d	d1	l	l'	L	d1	d1'	l	L	d2	l	PVC C-PVC	PP PVDF											
15mm 1/2"	16	22.11	20	1/4	134	21.2	20.2	20	134	Rc 1/2	15	128	128	48	54×66	100	10	104	86	19.5	25	7	13	
20 3/4	20	26.13	24	1/4	156	26.2	25.2	23	154	Rc 3/4	17	148	148	60	54×66	100	10	106	88	17.5	25	7	13	
25 1	25	32.16	27	1/4	186	33.0	32.0	25	182	Rc 1	20	172	172	70	67×80	100	12	111	93	18.5	25	7	13	
32 1 1/4	32	38.19	30	1/4	200	-	-	-	-	Rc 1 1/4	22	188	188	82	67×80	100	12	116	97	22.5	25	7	13	
40 1 1/2	40	48.21	37	1/4	271	47.0	46.0	28	253	Rc 1 1/2	25	245	245	100	108×108	156	21	177	144	27.5	45	9	15	
50 2	52	60.25	42	1/4	303	59.0	58.0	28	275	Rc 2	28	281	278	106	123×123	156	25	191	158	36	45	9	15	

SOCKET END



- NOTE.
- The shape and appearance of assembly differ a little with nominal size compared to this drawing.
 - Diaphragms except EPDM and PTFE are available in FKM, VIFLON[®]C (FKM-C), VIFLON[®]F (FKM-F), CSM and NBR when required.

27	O-RING (C)	2	<input type="checkbox"/> EPDM <input type="checkbox"/> Others ()	
25d	RING	2	STAINLESS STEEL (SUS304)	Used for C-PVC Body, Threaded End : 15~25mm
21	SCREW	1	Cr.Mo.STEEL (SCM435)	
20	STOPPER (A)	1	COPPER ALLOY (C3604)	
18	BOLT · NUT (A)	4Sets	STAINLESS STEEL (SUS304)	
17	THRUST RING (B)	1	UHMWPE	
16	THRUST RING (A)	1	UHMWPE	
15	O-RING (B)	1	EPDM	
14	O-RING (A)	1	EPDM	
13	RETAINING RING-C TYPE	1	STAINLESS STEEL (SUS304)	
12	NAME PLATE	1	PVC	
11	GAUGE COVER	1	PC	
10	HAND WHEEL	1	PP	
9	SLEEVE	1	COPPER ALLOY (C3604)	
8	STEM	1	COPPER ALLOY (C3604)	
7	JOINT	1	STAINLESS STEEL (SUS304)	
6	COMPRESSOR	1	PVDF	
5	CUSHION COVER	1	<input type="checkbox"/> Nothing <input type="checkbox"/> PVDF	Used for PTFE Diaphragm
4	CUSHION	1	EPDM	
3a	INSERTED METAL OF DIAPHRAGM	1	STAINLESS STEEL (SUS304)	
3	DIAPHRAGM	1	<input type="checkbox"/> EPDM <input type="checkbox"/> PTFE <input type="checkbox"/> Others ()	
26	UNION NUT	2	BODY-UNION NUT / BONNET END CONNECTOR	
25	END CONNECTOR	1	<input type="checkbox"/> PVC / PVC <input type="checkbox"/> C-PVC / PP <input type="checkbox"/> PP / PP	
2	BONNET	1	<input type="checkbox"/> PVDF / PPG <input type="checkbox"/> PVDF / PVDF	
1	BODY	1	<input type="checkbox"/> PVDF / PVDF	
No.	DESCRIPTION	QTY.	MATERIAL	REMARKS

ITEM	TRUE UNION DIAPHRAGM VALVE (TYPE 14) ASS'Y JIS : <input type="checkbox"/> SOCKET END, <input type="checkbox"/> THREADED END 15mm (1/2") ~ 50mm (2")		
DRAWN	E.Emmei	DATE	SCALE
CHECKED	H.Kawano	FEB.12.2019	~
APPROVED	K.Koushou	DRAWING No.	
		T1-M1001JE	
SPECIAL ORDER No.	ASAHYUKIZAI CORPORATION		