

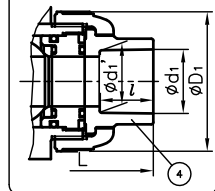
DIMENSIONS TABLE

NOMINAL SIZE	d	d'	FLANGED END							SOCKET END								THREADED END				
			DIN PN10				L	t	H ₁	PVC, C-PVC				PP, PVDF				d ₂	l	L	H ₁	
			D	C	n	h				d ₁	l	L	H ₁	d ₁	d ₁ '	l	L					H ₁
15mm 1/2"	15	15	95	65	4	14	130	12	88	20	16	102	72	19.5	19.3	14.5	99	71	Rp 1/2	15	102	74
20 3/4	20	20	105	75	4	14	150	14	104	25	19	120	85	24.5	24.3	16	114	83	Rp 3/4	17	120	89
25 1	25	25	115	85	4	14	160	14	120	32	22	131	104	31.5	31.3	18	123	100	Rp 1	20	131	105
32 1 1/4	40	32	140	100	4	18	212	16	165	40	26	173	147	39.45	39.2	20.5	148	131	Rp 1 1/4	22	163	141
40 1 1/2	40	32	150	110	4	18	200	16	159	50	31	163	142	49.45	49.2	23.5	148	131	Rp 1 1/2	25	163	141
50 2	51	43	165	125	4	18	230	16	185	63	38	197	170	62.5	62.1	27.5	176	154	Rp 2	28	197	168
65 2 1/2	78	58	185	145	4	18	304	18	256	75	44	282	245	74.25	73.95	31	256	227	Rp 2 1/2	32	264	235
80 3	78	58	200	160	8	18	310	21	259	90	51	282	245	89.2	88.85	35.5	251	224	Rp 3	35	264	235
100 4	100	78	220	180	8	18	350	18	305	110	61	349	305	109.05	108.65	41.5	310	279	Rp 4	45	338	299

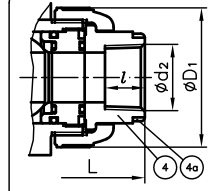
UNIT : mm

NOMINAL SIZE	SPIGOT END																			D ₁	D ₂	D ₃	D ₄	C ₁	H	H ₂	H ₃	H ₄	H ₅	A	S	e
	PVC					PP, PVDF					L	H ₁	L	H ₁	L	H ₁																
	d ₃	d ₃ '	l	L	H ₁	d ₃	l	t ₁	L	H ₁																						
15mm 1/2"	20	15	18.5	124	83	20	18.5	2.5	1.9	124	83	48	42	25	13.5	36	51.5	30	6	3	8	92	10.5	5.5								
20 3/4	25	20	24	144	99	25	22	2.7	1.9	144	99	60	42	25	15	36	59.5	36.5	6	3	10	100	11	5.5								
25 1	32	25	24.5	154	115	32	22.5	3.0	2.4	154	115	70	42	25	15	36	68	43.5	6	3	10	110	11	5.5								
32 1 1/4	-	-	-	-	-	-	-	-	-	-	-	100	57	35	23	50	89	61	10	3	12	131	18	6.5								
40 1 1/2	50	40	34	194	153	50	32	4.6	3.0	194	153	100	57	35	23	50	89	61	10	3	12	131	18	6.5								
50 2	63	51	38	224	178	63	36	5.8	3.0	224	178	126	57	35	23	50	102.5	72.5	10	3	12	159	18	6.5								
65 2 1/2	-	-	-	-	-	-	-	-	-	-	-	152	81	55	30	70	140	94	13	3	19	240	24	9								
80 3	90	80	51	299	252	90	38	8.2	4.3	295	246	152	81	55	30	70	140	94	13	3	19	240	24	9								
100 4	110	93.6	61	358	308	110	44.5	10.0	5.3	353	301	210	116	70	40	102	178	126	16	3	23	300	34	11								

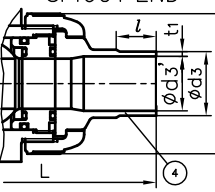
SOCKET END



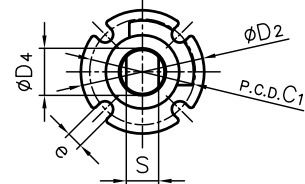
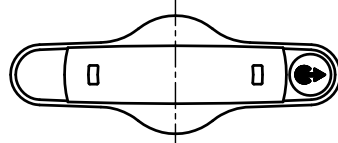
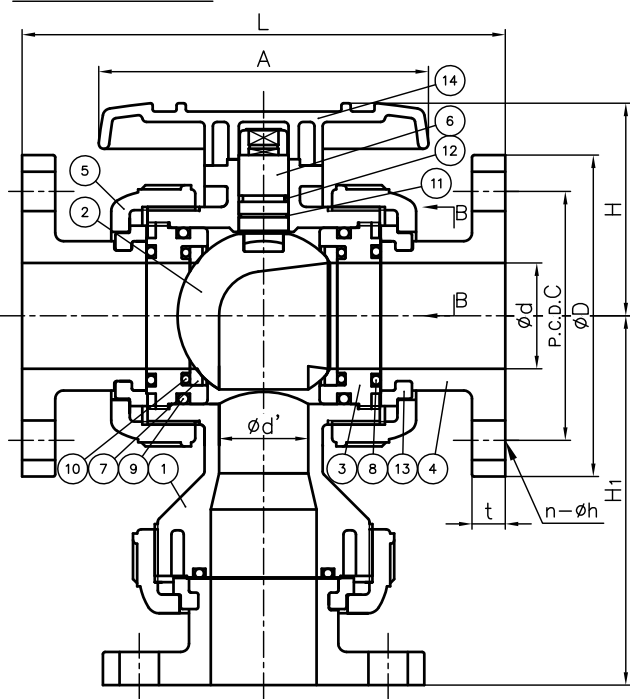
THREADED END



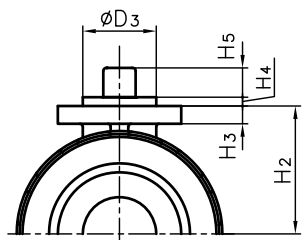
SPIGOT END



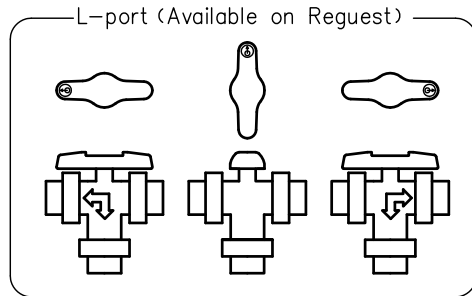
FLANGED END



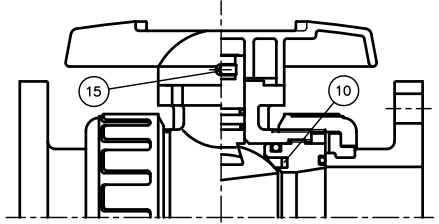
(Detail of Stem Part.)



B-B



65-100mm



NOTE.

The shape and appearance of assembly differ a little with nominal size compared to this drawing.

No.	DESCRIPTION	QTY.	MATERIAL	REMARKS
4a	RING	3	STAINLESS STEEL (SUS304)	Used for C-PVC Body, Threaded End: 15-25mm
15	TAPPING SCREW (A)	1	STAINLESS STEEL (SUS304)	Used for Size 65-100mm
14	HANDLE	1	ABS	
13	STOP RING	3	PVDF	Used for Flanged End
12	O-RING (E)	1		
11	O-RING (D)	1	□EPDM	
10	CUSHION	2	□FKM	Used for Size 65-100mm
10	O-RING (C)	2	□Others	Used for Size 15-50mm
9	O-RING (B)	2	()	
8	O-RING (A)	3		
7	SEAT	2	PTFE	
6	STEM	1		
5	UNION NUT	3	□PVC	
4	END CONNECTOR	3	□C-PVC	
3	CARRIER	2	□PP	
2	BALL	1	□PVDF	
1	BODY	1		

ITEM	3-WAY BALL VALVE (TYPE 23) ASS'Y DIN : □FLANGED END, □SOCKET END, □THREADED END, □SPIGOT END 15mm (1/2") ~ 100mm (4")		
DRAWN	M.Iwakiri	DATE	SCALE
CHECKED	H.Kawano	DEC.21.2018	
APPROVED	K.Koushou	DRAWING No. T3-M1003DE	
SPECIAL ORDER No.	ASAHI YUKIZAI CORPORATION		